



17 Cherry Tree Close, Stone

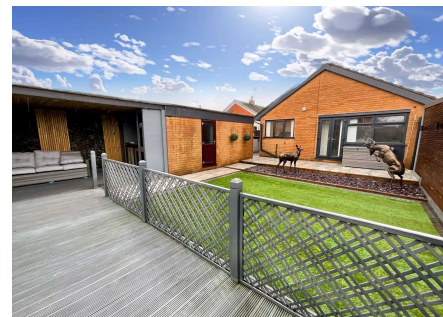
£260,000 Freehold



No expense spared in this completely renovated two-bedroom bungalow! • A state-of-the-art heat pump installed for hot water, heating and air conditioning, all powered by solar panels! • Sought after location situated on a quiet cul-de-sac in Stone • Having a luxurious and indulgent bathroom and contemporary kitchen. • Generous plot with sophisticated low maintenance garden, undercover seating and bar area!



We have found the stag of bungalows on Cherry Tree Close – majestic, refined, and totally ready for you to strut your stuff. This two-bedroom bungalow has been refurbished to offer sophistication, met with stag swagger! No expense has been spared on this beauty; the property is decked out with all electric, having a heat pump installed for hot water, heating, and cooling, all powered by solar panels that have been purchased outright, making this home state of the art! Upon entering, the interior boasts a seamless flow, with two spacious double bedrooms and an indulgent bathroom complete with a luxury walk-in shower. The lounge/diner is spacious, with French doors opening to the garden, and the modern and stylish kitchen overlooks the rear, with space for all appliances. Outside now is a fabulous-sized blocked paved drive, space for multiple vehicles, and a security gate leading to the garage, ideal for storage. The rear garden has been made a haven of low-maintenance bliss, where artificial lawn meets leafy borders and a sprawling decking area awaits, offering an idyllic space for alfresco gatherings. A charming bar area stands ready to host celebrations under cover, complete with electricity and lighting for endless enchantment. Cherry Tree Close is conveniently situated in a quiet cul-de-sac on the edge of the popular market town of Stone, with local shops close by. This bungalow is the epitome of luxury living, and it's ready and waiting for you to make it your own. Give our Stone office a call to organise a viewing.



Luxurious 2-bed bungalow on Cherry Tree Close, Stone. Fully refurbished with state-of-the-art technology including solar panels. Spacious interior, sleek kitchen, and elegant bathroom. Outside offers ample parking, garage, and stunning garden with decking and bar area. Call to view!
Council Tax band: C

Tenure: Freehold

EPC Energy Efficiency Rating: D

EPC Environmental Impact Rating: C

