



35 Millstone Court, Stone

£175,000 Leasehold



Perfect property for first time buyers, those looking to downsize and investment buyers. • Beautifully presented ready just to move straight in with a contemporary kitchen, modern bathroom and en-suite. • A living room flooded with natural light having French doors to a Juliet balcony enjoying far reaching views across Stone Town. • Two spacious double bedrooms, both with fitted wardrobes. • Positioned in a well situated development with allocated parking, moments from Stone Town Centre and Railway Station.



Time to put an end to your property-hunting grind...Say goodbye to endless listings and hello to Millstone Court. Whether you're a savvy investor, a first-time buyer, or looking to downsize. Here at James Du Pavey, we've uncovered the perfect solution, a sleek two-bedroom apartment in a very well-situated development. This luxury first-floor apartment comes with a spacious entrance hallway, having two handy storage cupboards. Through to a gorgeous and generous-sized lounge/diner where you can entertain in style, featuring French doors opening to a Juliet balcony offering views of lush greenery and far-reaching views across Stone town. A modern and great-sized kitchen comes with plenty of worktop space and built-in appliances. Two spacious bedrooms, both with fitted wardrobes and one having an en-suite shower room and completing the space with a main bathroom. Outside, landscaped grounds surround the entrance and offers the bonus of a parking space, making it easy to explore the shops, restaurants, and bars Stone has to offer. Don't miss out and schedule a viewing today and say goodbye to the property hunt for good!

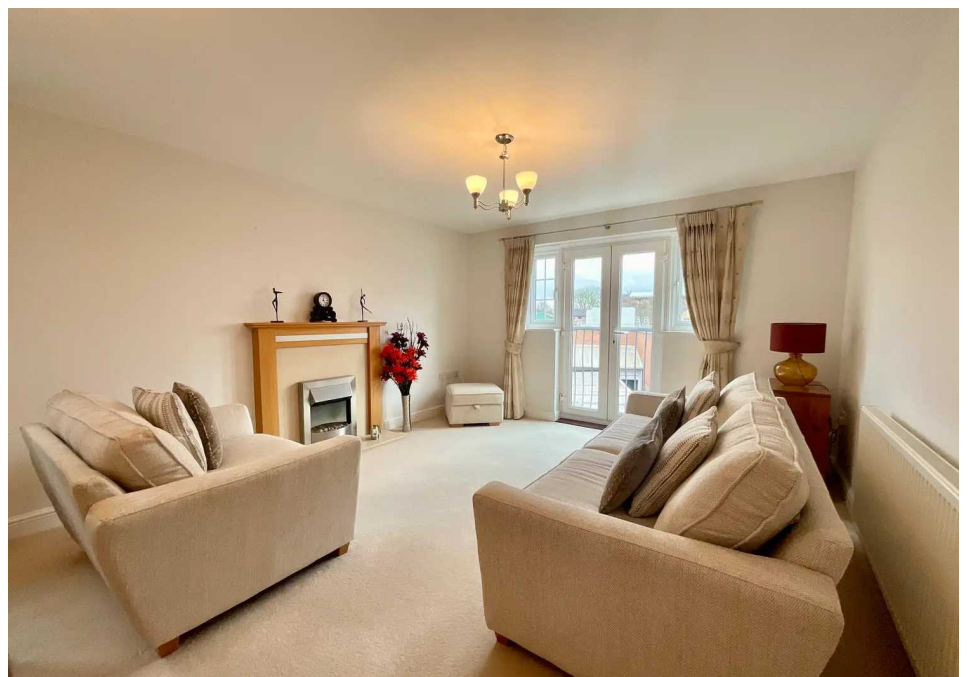
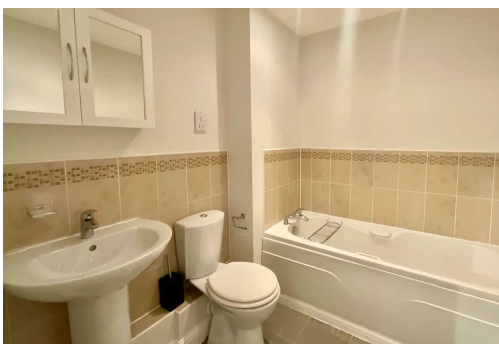


Luxury two-bedroom apartment in well-situated development with spacious lounge/diner, modern kitchen, fitted wardrobes, en-suite shower room, parking space, and scenic views in Stone town. Ideal for investors, first-time buyers, or downsizers. Book a viewing today!
Council Tax band: C

Tenure: Leasehold

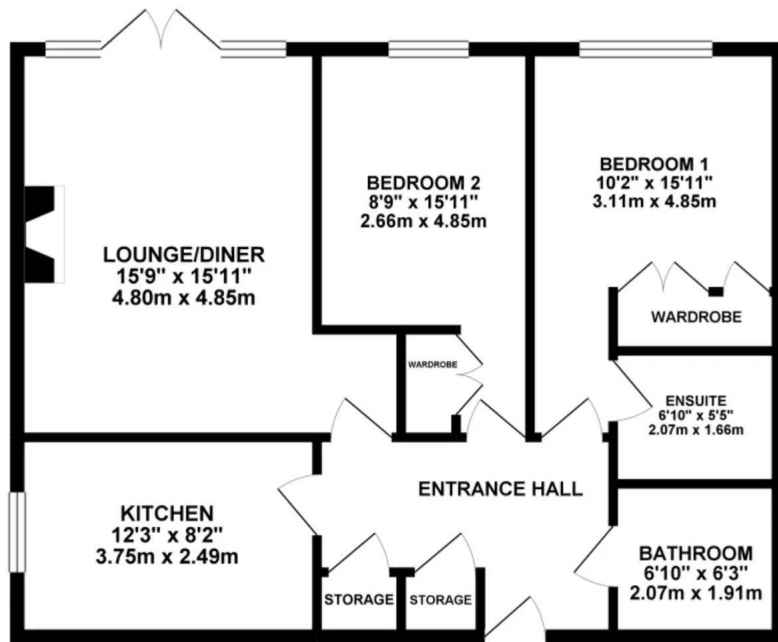
EPC Energy Efficiency Rating: C

EPC Environmental Impact Rating: B





GROUND FLOOR



Whilst every attempt has been made to ensure the accuracy of the floorplan contained here, measurements of floors, windows, rooms and any other items are approximate and no responsibility is taken for any error, omission or mis-statement. This plan is for illustrative purposes only and should be used in such by any prospective purchaser. The services, fixtures and appliances shown here have not been tested and no guarantee as to their operability or efficiency can be given.
made with hertings 402324

You can include any text here. The text can be modified upon generating your brochure.

01785 814917