

## 88 Spring Gardens, Stone

£239,950 Freehold



Two double bedrooms and a modern family bathroom featuring a handy cupboard for all your storage needs! • Pack them bags and get ready for the move as this wonderful home is offered with NO UPWARD CHAIN!!!! • Banish thoughts of living on one level means compromising on space. Having a large lounge/diner and a good sized kitchen! All rooms are of a great size. • A short walk to town, bus routes and local shops close by – everything you need! • Plenty of parking with driveway leading to a handy garage, fully enclosed low maintenance garden so you can enjoy the summer months.



Listen closely as we have something sure to put a spring in your step. You will be skipping with excitement to see what's behind the front door, once you step inside this superb two-bedroom detached bungalow set in the heart of stone you will be jumping for joy that you've found your perfect home. As you approach the bungalow, you'll notice the front door situated on the side, which leads you into the entrance hall. The hall serves as the central hub, providing access to all the ground-floor rooms. To the left you will find two double bedrooms both having windows that overlook the front of the bungalow, offering a pleasant view. On the right of the entrance hall is the modern bathroom, featuring a shower over the bath and a handy cupboard for all your storage needs. Moving forward, you'll enter the large lounge area featuring an electric fireplace, which adds a cosy touch to the room perfect for relaxation. Within the room, you can comfortably accommodate a dining table perfect for entertaining guests. There is also a window and a door leading to the garden, allowing natural light to flood the room. Off this room, you'll find a well design kitchen equipped with a range of wall and base units, providing ample storage space. Stepping outside, you'll discover a lovely rear garden that offers a peaceful feel. The garden features a patio area, perfect for outdoor dining, and a neatly Astro turf lawn. Not only this....there is also a fantastic summer house. The low-maintenance garden allows you to enjoy the outdoors without the hassle of upkeep. The property boasts a spacious driveway and a garage. A short hop, skip, and a jump into town, bus routes, schooling on the doorstep, easy access to handy commuter links, and local shops close by. All this is offered with NO UPWARD CHAIN!! Call today to arrange your viewing.



Exciting 2-bed detached bungalow in Stone. Central hub entrance hall, 2 double bedrooms, modern bathroom, large lounge with fireplace, dining area, well-equipped kitchen, lovely rear garden with patio, Astro turf lawn, and summer house. Spacious driveway, garage, convenient location with no upward chain. Call to view!

Council Tax band: C

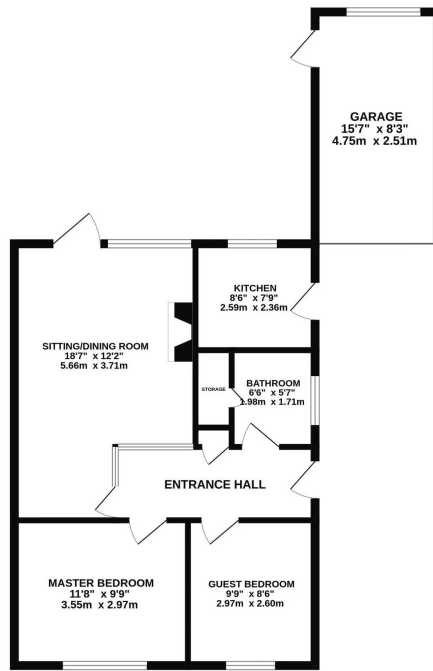
Tenure: Freehold

EPC Energy Efficiency Rating: D

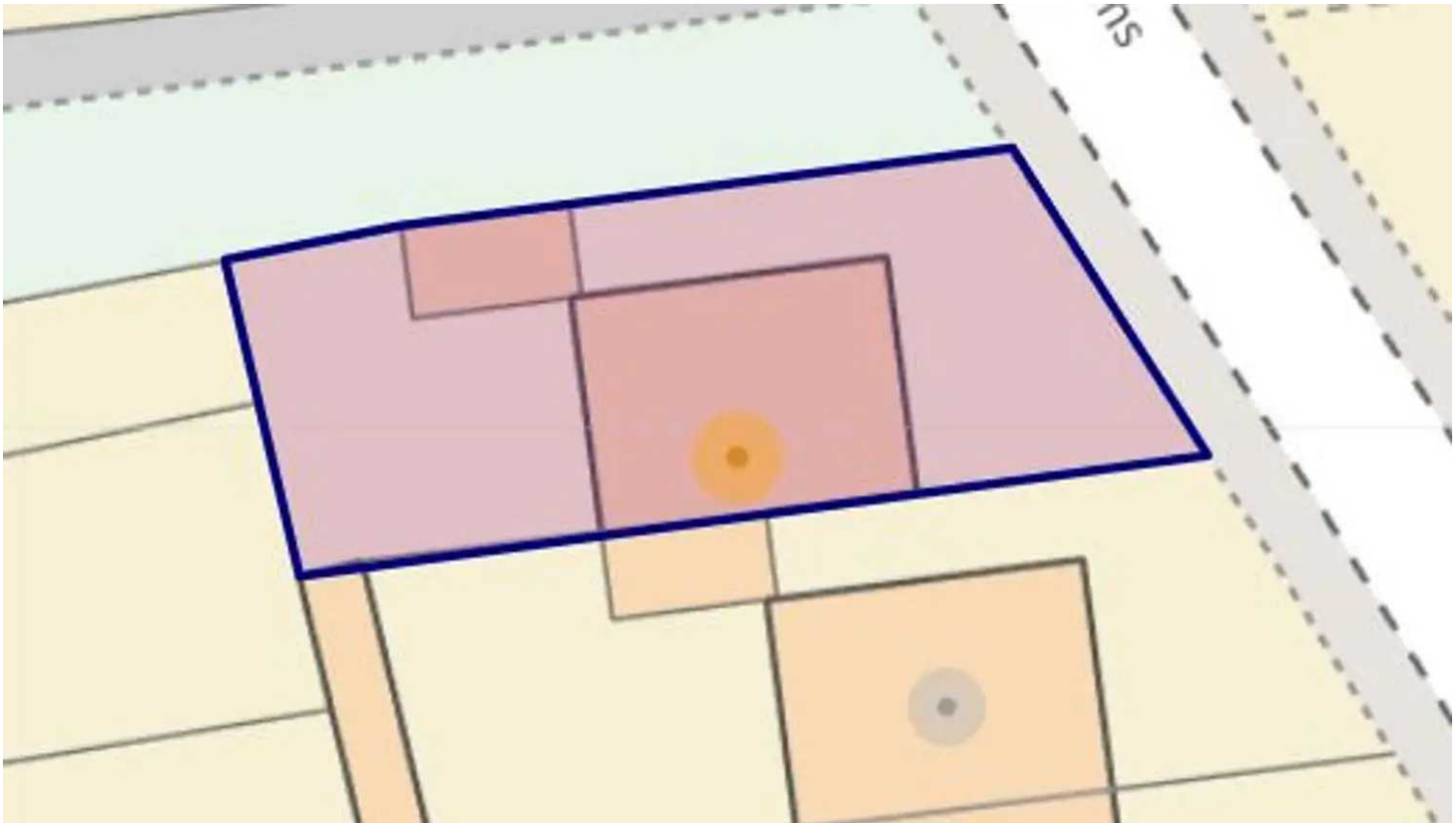
EPC Environmental Impact Rating:



GROUND FLOOR



Whilst every attempt has been made to ensure the accuracy of the floorplan contained here, measurements of doors, windows, rooms and any other items are approximate and no responsibility is taken for any error, omission or mis-statement. This plan is for illustrative purposes only and should be used as such by any prospective purchaser. The services, systems and appliances shown have not been tested and no guarantee as to their operability or efficiency can be given.  
Made with Metropix ©2022



You can include any text here. The text can be modified upon generating your brochure.

01785 814917