



## 3 The Fillybrooks, Stone

£375,000 Freehold



Private garden with raised patio area, perfect for alfresco dining. • 3 double bedrooms, master with ensuite and walk in wardrobe. • Gorgeous open plan kitchen/diner with fitted appliances. • A large driveway with space for the whole family, friends and a motorhome! • Close to Stone town centre! With a rail link, amenities and schools.





Beauty begins the moment you walk through the door of this gorgeous 3-bed detached dormer bungalow! Most defiantly, the finest FILLY on the block, this property is not to be missed! Comprising a long entrance hall, to the right is the stylish kitchen/diner, perfect for entertaining guests while cooking or helping the children with homework before mealtimes. This room has plenty of natural light with a beautiful bay window to the front and a large window to the side. To the left of the entrance hall is the cosy sitting room. This room also boasts a bay window to the front. Further down the entrance hall are two good-sized double bedrooms, a modern family bathroom with shower cubical and a utility room. Grand double doors lead you out to the rear of the property to a private alleyway that wraps around the bungalow, taking you out to the sizable driveway at the front and a private garden to the side. The garden has a raised patio area, which is a great place to sit back and relax. Upstairs is the main bedroom with a walk-in wardrobe, two storage cupboards and a substantial, elegant Ensuite with roll top bath. You will feel truly spoiled! All this and Stone town centre is just around the corner with a handy rail link, plenty of amenities and good local schools close by. Give the Stone branch a call today to book your viewing! – 01785 814917.



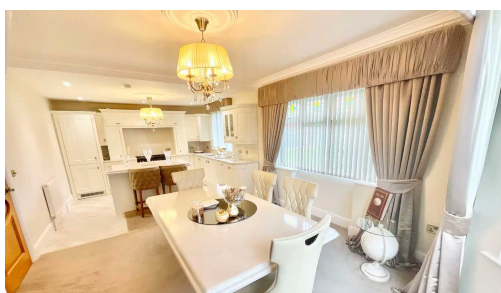
Beautiful 3-bed detached dormer bungalow in Stone, boasting a stylish kitchen/diner, cosy sitting room, 2 double bedrooms, private garden, and main bedroom with Ensuite and walk-in wardrobe. Conveniently located near town centre, amenities, rail link, and good schools. Call the Stone branch now!

Council Tax band: D

Tenure: Freehold

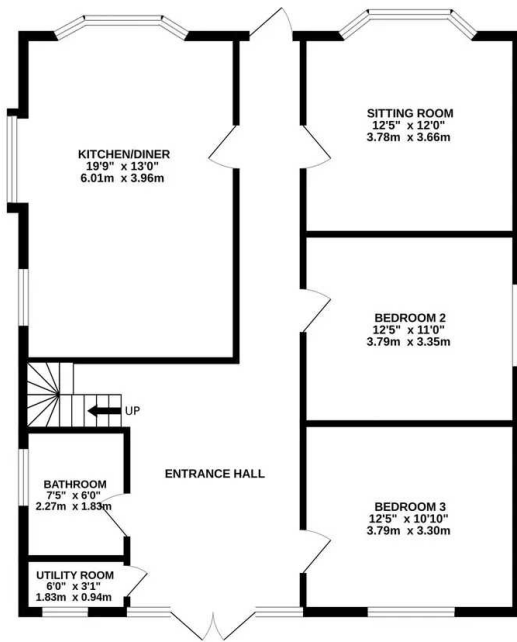
EPC Energy Efficiency Rating: C

EPC Environmental Impact Rating: D

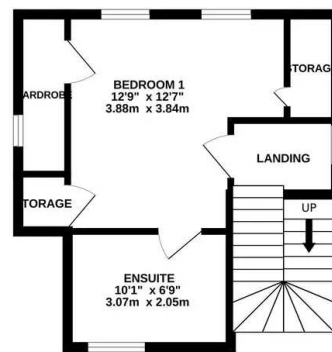




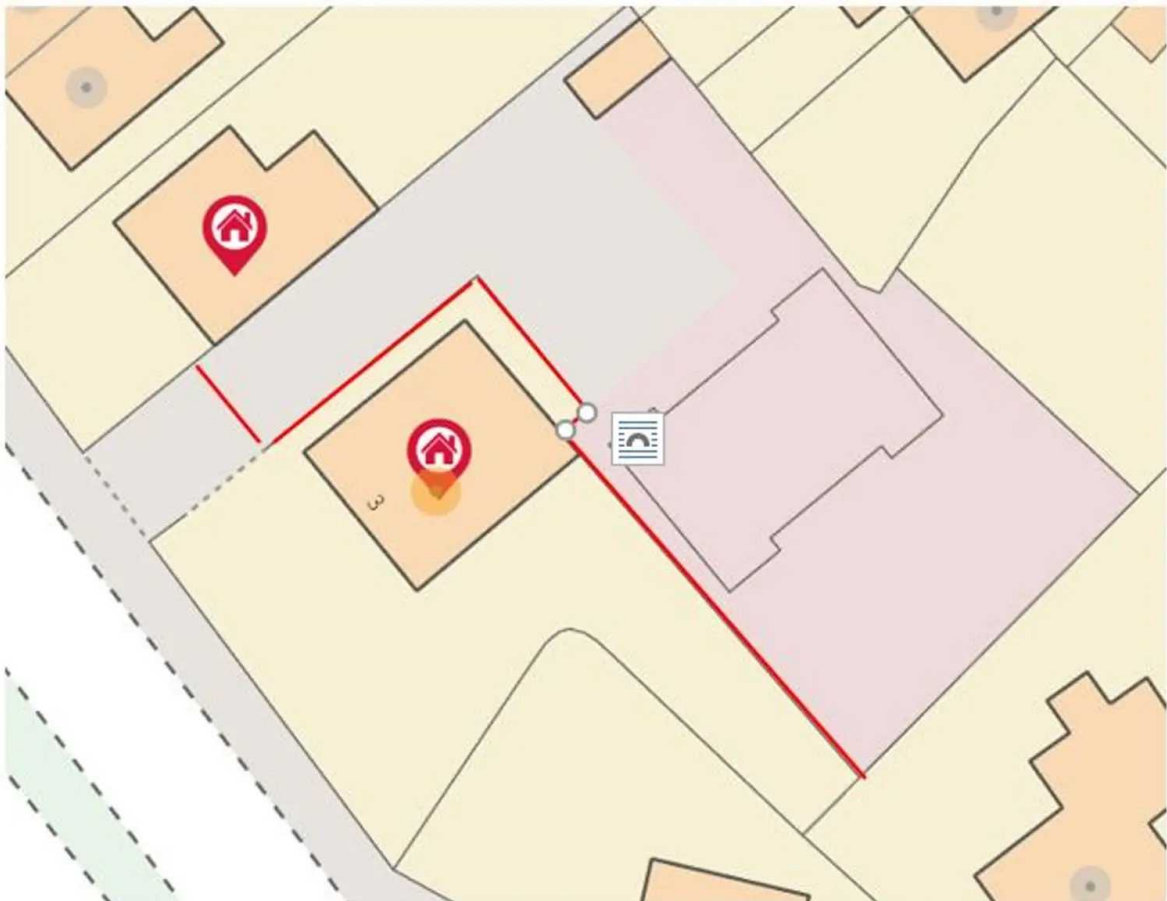
GROUND FLOOR



1ST FLOOR



Whilst every attempt has been made to ensure the accuracy of the floorplan contained here, measurements of doors, windows, rooms and any other items are approximate and no responsibility is taken for any error, omission or mis-statement. This plan is for illustrative purposes only and should be used as such by any prospective purchaser. The services, systems and appliances shown have not been tested and no guarantee as to their operability or efficiency can be given.  
Made with Metropix ©2023



You can include any text here. The text can be modified upon generating your brochure.