



## 166 Lichfield Road, Stone

£550,000 Freehold



Spacious layout, with ample room to roam, this home offers generous living spaces for the whole family. • From the moment you step inside, you'll be greeted by an atmosphere that feels like home, warm and welcoming. •

Tucked away on Lichfield Road, this home offers a sense of privacy and serenity. • With plenty of potential for personalisation, you can make this house truly your own. • Perfect location, just a short stroll from Stone's town centre.



At James Du Pavey, we understand the significance of finding a home where cherished memories are not just made, but treasured for a lifetime. It is with great excitement that we introduce this exceptional four-bedroom detached home on Lichfield Road, perfectly tailored to meet your family's most important needs and desires. With its spacious layout, inviting atmosphere, privacy, tranquillity, the opportunity to customize and unbeatable location, this property ticks all the boxes for your ideal family abode. A handy porch leads the way into the entrance hall, where you are taken through to a spacious living room, having nostalgic wooden flooring and a stunning granite and stone fireplace, perfect for cosy nights in. Moving through the home, discover a dining room fit for grand gatherings, or a competitive family games night. The large kitchen breakfast room, where we can only imagine buzzing with the joyful commotion of family life. Downstairs is complete with a convenient wet room, guest cloakroom and ample under the stairs storage. Upstairs, four generous bedrooms, provide ample space for all the family, and a beautifully sized family bathroom with separate shower and corner bath...the ideal spot to unwind and soak in the day's events. Outside and the ample gardens beckon with established woodland trees, shrubs, and plants, ensuring endless enjoyment for green thumbs and budding adventure seekers. Located just a short stroll away from Stone's charming town centre, with its markets, festivals, restaurants and entertainment options, as well as excellent commuter links, and close by to well-regarded schooling, this home truly has it all. Don't miss the opportunity to make this your forever home, call our Stone office today to organise a viewing.



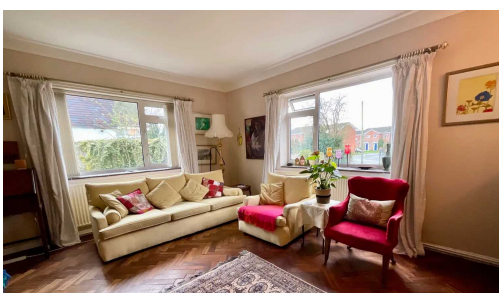
Introducing an exceptional 4-bed detached home on Lichfield Road - perfect for family living. Spacious rooms, cosy fireplace, dining area, large kitchen, beautiful gardens, and great location near Stone town centre. Ideal family abode - book a viewing now!

Council Tax band: E

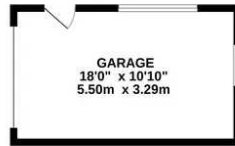
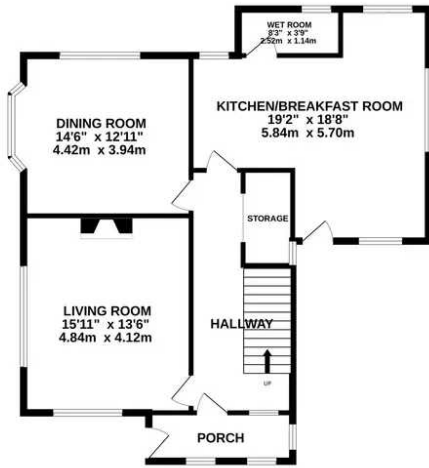
Tenure: Freehold

EPC Energy Efficiency Rating: E

EPC Environmental Impact Rating: F



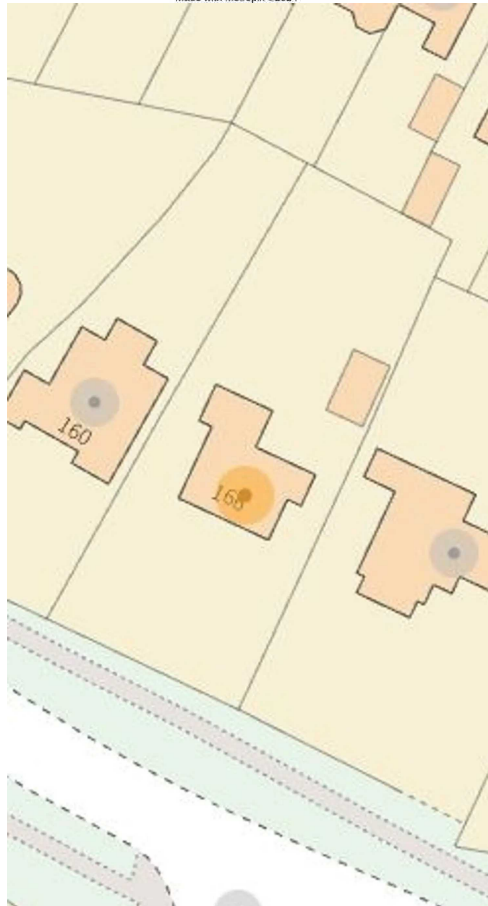
GROUND FLOOR



1ST FLOOR



Whilst every attempt has been made to ensure the accuracy of the floorplan contained here, measurements of doors, windows, rooms and any other items are approximate and no responsibility is taken for any error, omission or mis-statement. This plan is for illustrative purposes only and should be used as such by any prospective purchaser. The services, systems and appliances shown have not been tested and no guarantee as to their operability or efficiency can be given.  
Made with Metropix ©2024



You can include any text here. The text can be modified upon generating your brochure.