



5 Wulfad Court, Stone

£195,000 Freehold



This two-bedroom home offers phenomenal use of space, ensuring every corner is utilized efficiently and effectively. • Step inside to discover a home that's been tastefully designed with stylish interiors, creating a welcoming atmosphere. • The main bedroom has a fabulous-sized wardrobe space, while the second bedroom offers ample room for various purposes. • Escape to the rear garden, with seating areas, lush greenery, and well-maintained landscaping—a perfect spot to relax or entertain. • Ideal location with Stone Town Centre just a stone's throw away, ensuring you have everything you need right at your fingertips.



Wit Woo Wulfad Court!! Welcome to this wonderful two-bedroom mid-terrace home. Super stylish and ready to move into, this hidden gem offers phenomenal use of space that will impress any buyer. Enter into the great-sized lounge/diner, with cleverly utilized space under the stairs and room for a dining table at the front. The breakfast kitchen overlooks the garden and boasts clever storage ideas, including a breakfast bar where you can enjoy your coffee with views to the garden. Upstairs, you'll find two bedrooms, with the main bedroom featuring a fabulous-sized wardrobe space with sliding doors, and the second bedroom large enough for a bed, desk space, and ample storage. The bathroom is swish and smart, with a luxury monsoon shower over the bath. Outside, the property offers a pretty front along with two allocated parking spaces and then an even more delightful rear garden awaits! It's gorgeous and has well-maintained landscaping, a true little paradise with gravelled seating areas and lawn. Ideally located at the end of Wulfad Court on Aston Lodge and within close proximity to Stone Town Centre, this home offers everything you need. Perfect for first-time buyers, investors, and those looking to downsize without compromising on location! If Wulfad Court has caught your eye, don't hesitate! Call us now to arrange your viewing.

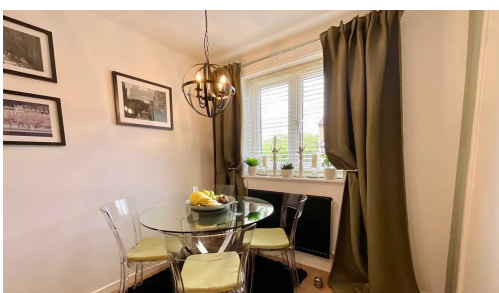
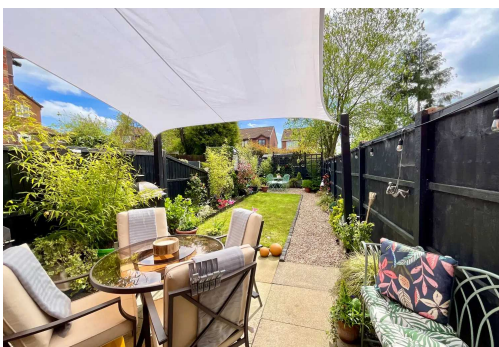


Stunning two-bedroom mid-terrace home on Wulfad Court! Stylish lounge/diner, breakfast kitchen with garden views, two bedrooms with ample storage, swish bathroom. Beautiful rear garden with seating areas. Ideal location near Stone Town Centre. Perfect for first-time buyers, investors, or downsizers! Council Tax band: B

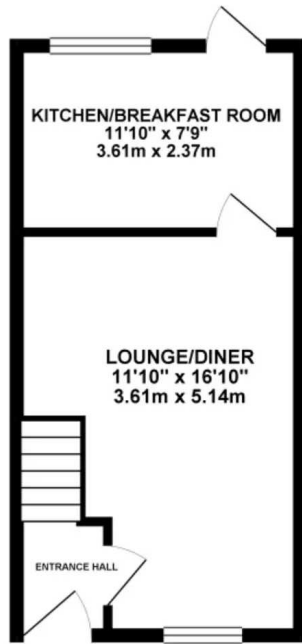
Tenure: Freehold

EPC Energy Efficiency Rating: D

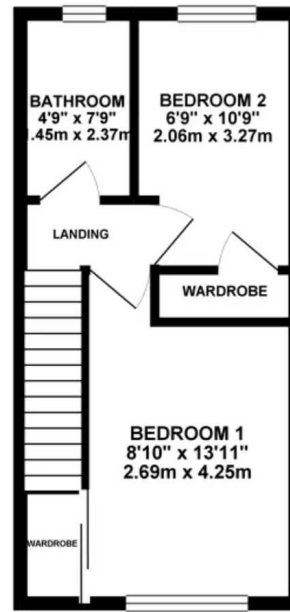
EPC Environmental Impact Rating: D



GROUND FLOOR



1ST FLOOR



Whilst every attempt has been made to ensure the accuracy of the floorplan contained here, measurements of doors, windows, rooms and any other items are approximate and no responsibility is taken for any error, omission or mis-statement. This plan is for illustrative purposes only and should be used as such by any prospective purchaser. The services, systems and appliances shown have not been tested and no guarantee is made as to their operability or efficiency over time.
Made with AArchitect 8/2024



You can include any text here. The text can be modified upon generating your brochure.