



## 3 Welsh Row Head, Nantwich

£1,150 pcm



Modern three storey end town house • Beautifully presented and appointed throughout • Desirable location on the edge of the conservation area just off the historic Welsh Row • Situated on a private road with allocated off road parking • Fitted kitchen with integral appliances including fridge/freezer, dishwasher, oven, and hob



\*\*\* Available now\*\*\* LOCATION, LOCATION, LOCATION! Situated on a PRIVATE ROAD off Welsh Row, one of the MOST DESIRABLE STREETS in Nantwich, this fantastic town house offers contemporary living with LIGHT & SPACIOUS accommodation, beautifully finished and IMMACULATELY PRESENTED throughout. The accommodation comprises to the ground floor, entrance hallway with storage cupboard, WC and a superb open plan kitchen dining room / snug. To the first floor is the generous sitting room with dual aspect. To the second floor, there are two spacious double bedrooms and the bathroom. To the rear of the property is a lovely, private courtyard garden, perfect for relaxing and enjoying during the summer months. In addition, the property benefits from an allocated parking space. Deposit 5 Weeks Rent.

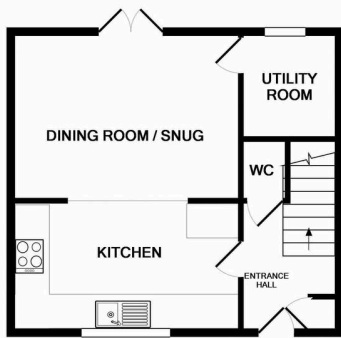


**\*\*Available June\*\*** Stunning town house on a private road off Welch Row in Nantwich. Contemporary, immaculately presented with 2 bedrooms, open plan kitchen, spacious living room, private courtyard garden, and allocated parking. Deposit 5 Weeks Rent. Council Tax band: TBD

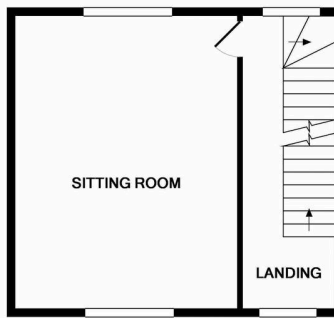
EPC Energy Efficiency Rating: B

EPC Environmental Impact Rating: B



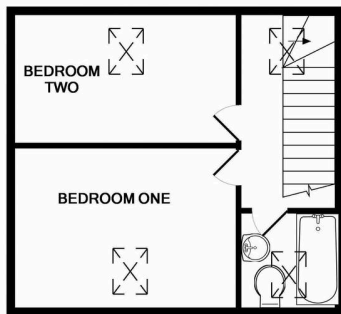


GROUND FLOOR

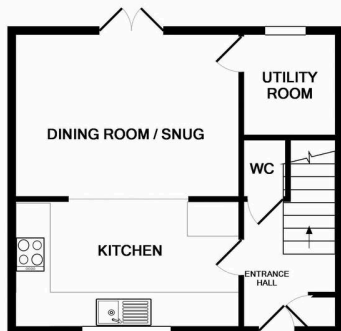


1ST FLOOR

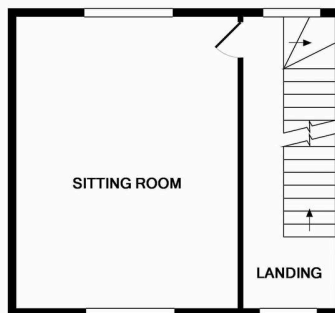
Whilst every attempt has been made to ensure the accuracy of the floor plan contained here, measurements of doors, windows, rooms and any other items are approximate and no responsibility is taken for any error, omission, or mis-statement. This plan is for illustrative purposes only and should be used as such by any prospective purchaser. The services, systems and appliances shown have not been tested and no guarantee as to their operability or efficiency can be given  
 Made with Metropix ©2017



2ND FLOOR

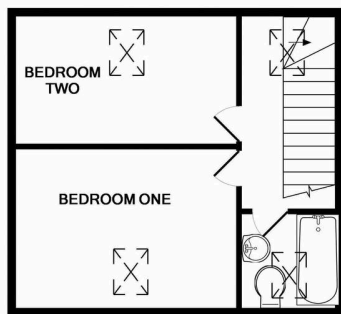


GROUND FLOOR



1ST FLOOR

Whilst every attempt has been made to ensure the accuracy of the floor plan contained here, measurements of doors, windows, rooms and any other items are approximate and no responsibility is taken for any error, omission, or mis-statement. This plan is for illustrative purposes only and should be used as such by any prospective purchaser. The services, systems and appliances shown have not been tested and no guarantee as to their operability or efficiency can be given  
 Made with Metropix ©2017



2ND FLOOR

You can include any text here. The text can be modified upon generating your brochure.