



28 Hughes Drive, Stone

£1,750 PCM Freehold



With five generous bedrooms and two reception rooms, there's plenty of room to spread out, whether you're working from home, hosting guests, or just enjoying your own space. • The spacious kitchen-diner is a dream for those who love to cook, entertain, or simply gather around the table. • The private rear garden offers a great outdoor space for relaxing, socialising, or even trying your hand at a little gardening. • With driveway parking and a single garage, there's no need to worry about where to keep your car, bikes, or extra belongings. • On the popular Udall Grange development, you're close to Stone's town centre, countryside walks, and commuter links, the best of both worlds, right on your doorstep.



Who's who on Hughes Drive? Could it be you? Step into the spotlight with this beautifully presented five-bedroom detached home on the sought-after Udall Grange development in Stone. Offering space, style, and convenience, this home is perfect for those who want the best of both worlds, local amenities at your fingertips and the stunning Staffordshire countryside just beyond your doorstep. Inside, the hallway leads to a spacious lounge at the front, opposite, a versatile second reception room awaits, ready to be transformed into a home office, snug, or playroom. But the real showstopper? The expansive kitchen-diner at the rear, complete with a fully fitted kitchen, integrated appliances, breakfast bar and ample counter space, a true hub for entertaining or everyday living. A separate utility room provides additional storage and access to the garden. Upstairs, the five well-proportioned bedrooms ensure plenty of space for family, guests, or home-working setups. The master bedroom takes centre stage with its private en suite shower room, while the remaining bedrooms share a modern family bathroom. Outside, the driveway parking leads to a single garage, ideal for extra storage. The enclosed rear garden is laid to lawn with a patio area. This prime location offers excellent access to Stone's amenities, reputable schools, and commuter links, making it an ideal choice for professionals and families alike. Will you be the next leading name on Hughes Drive? Full references and a security deposit are required for tenancy.

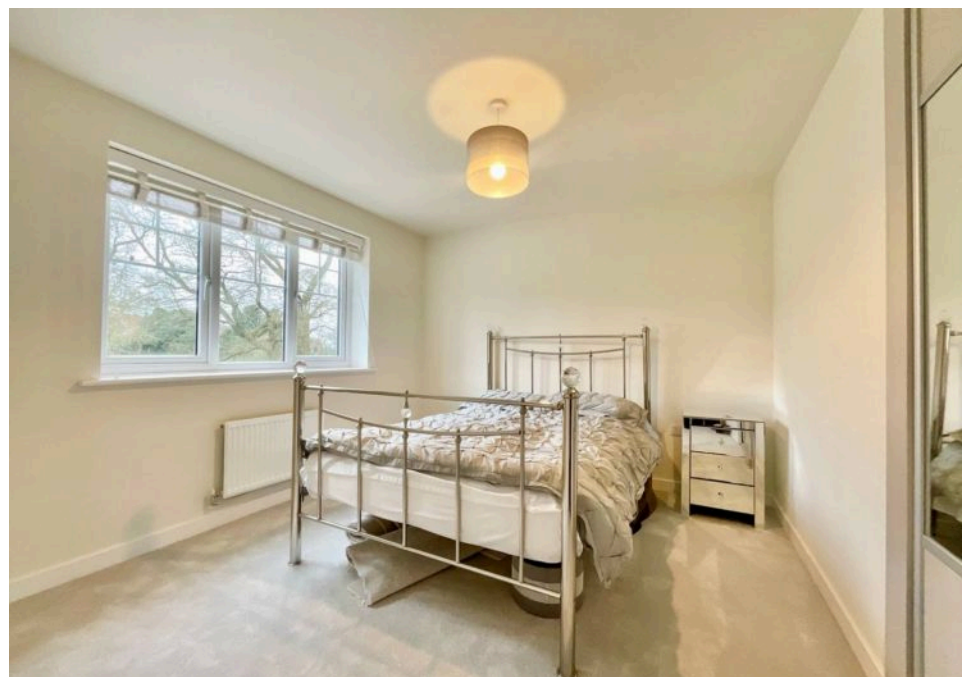


Who's next to make their mark on Hughes Drive? A spacious five-bedroom home with modern comforts, great location, and plenty of room to thrive! Council Tax band: TBD

Tenure: Freehold

EPC Energy Efficiency Rating: B

EPC Environmental Impact Rating: B



You can include any text here. The text can be modified upon generating your brochure.

01785 814917