

## Southlands Pinewood Road, Ashley Heath

£850,000 Freehold



A beautiful home recently built in 2021 offering spacious living and a long private driveway for your own grand entrance. • Five spacious double bedrooms and four bathrooms, including a luxurious master suite, allows rooms for everyone to relax and unwind! • A large kitchen/diner with a connecting pantry and utility room is the heart of the home, ideal for entertaining and dining guests, along with the spacious living rooms at hand. • A long driveway and double garage makes parking a breeze upon your grand entrance. At the start of the drive, laid lawn makes for great garden space to make your own. • Located on Pinewood Road in Ashley Heath, enjoy quiet living while still being close by to Loggerheads and Eccleshall for excellent amenities, schools and travel links.





Ready to unleash your inner explorer? Pack your bags, because your next journey starts here! Southlands, a stunning new build from 2021, is perched high and proud, ready to welcome you to a home that promises more than just a roof over your head, it's a journey of discovery and delight! With five spacious bedrooms, four stylish bathrooms and reception areas that'll leave you speechless, this home is an adventure in itself.

Start your journey up the grand driveway and park up outside this captivating home. As you step through the cosy porch and into the welcoming entrance hall, you'll be greeted by a show-stopping Oak central split staircase that takes centre stage. From here, doors lead you into the ground-floor reception rooms, cloakroom and W.C. Tiled flooring glides through the hallway, creating a seamless flow and guiding you toward the next exciting destination. The kitchen/diner is the true heart of the home, spacious, stylish and ready for family feasts and entertaining bliss. With bespoke cabinetry, a gleaming quartz worktop, a breakfast bar kitchen island and integrated appliances, this is the perfect place to unleash your inner chef. The dining area offers ample room for your dream dining setup and French doors lead you out to the front of the property, inviting the outdoors in. Plus, a pantry and utility room with matching cabinetry offer all the space you need to keep your culinary kingdom organised. The utility room also provides access to the outdoors via a side door, just another route to your next great adventure. Venture into the formal living room, another generously sized space with wooden flooring and more French doors leading to the garden. The seamless flow leads you into a connected reception room, perfect for a study or cosy hideaway.

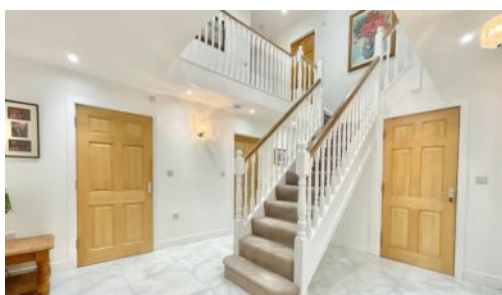
Take a journey up the beautiful staircase and discover five double bedrooms, each offering its own unique charm. The master suite is a retreat in itself, featuring an expansive layout, a private walk-in wardrobe and an ensuite bathroom. Bedrooms two and three also come with private ensuite bathrooms, offering comfort and privacy for guests or family members. Bedrooms four and five are perfect for double occupancy, offering versatility and space. The family bathroom is a sanctuary, with floor-to-ceiling tiles, his-and-hers sinks, a walk-in shower, a full bathtub and a W.C., ideal for unwinding after a day of exploring.

Your adventure continues with a double garage that accommodates all your parking and storage needs, plus a long driveway for extra parking options. A small patch of lawn by the house and landscaped lawn at the entrance ensure outdoor fun year-round. Garden beds surround the home, just waiting for you to bring your creative touch to life. Located on Pinewood Road in Ashley Heath, Southlands offers quiet living with easy access to the vibrant amenities of Eccleshall and Loggerheads, as well as excellent schools and travel links. Ready to begin your journey? Pack your bags and give us a call to book a viewing today, this once in a lifetime adventure won't last long!

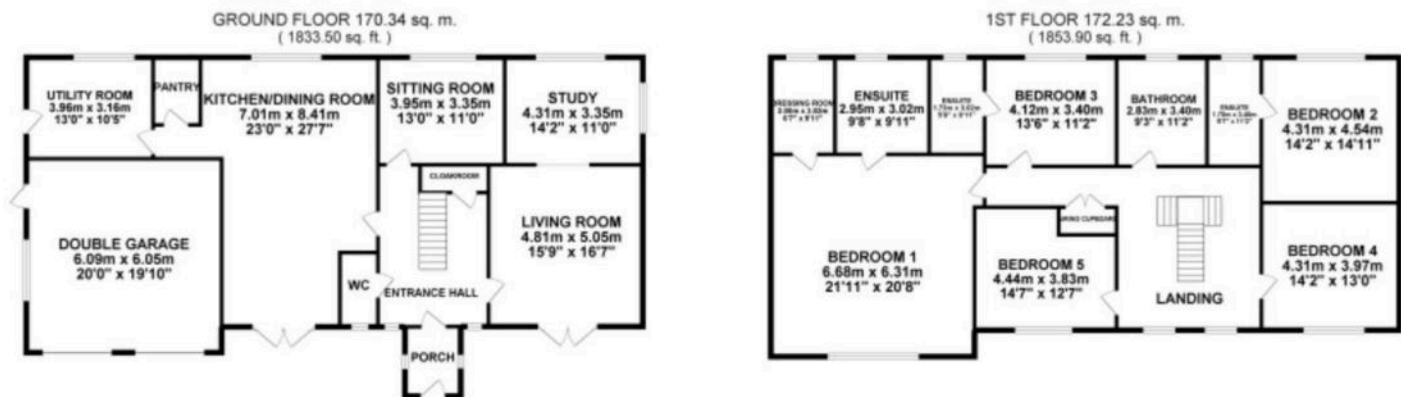


5 bed, 4 bath stunning home with grand driveway, spacious kitchen/diner, luxurious master suite, double garage and garden. Located in Ashley Heath, close to amenities. Book a viewing now! Council Tax band: G

Tenure: Freehold







TOTAL FLOOR AREA : 342.57 sq. m. ( 3687.41 sq. ft. ) approx.

Whilst every attempt has been made to ensure the accuracy of the floorplan contained here, measurements of doors, windows, rooms and any other items are approximate and no responsibility is taken for any error, omission or mis-statement. This plan is for illustrative purposes only and should be used as such by any prospective purchaser. The services, systems and appliances shown have not been tested and no guarantee as to their operability or efficiency can be given.  
Made with Metropix ©2025



You can include any text here. The text can be modified upon generating your brochure.

01785 851886