



2 Ravenswood Close, Newcastle

£300,000 Freehold



This beautiful four-bedroom detached home on the sought-after Westbury Park is being offered for sale with NO CHAIN! • This home offers three generously sized double bedrooms, a further single bedroom, plus a shower room and a family bathroom! • You will find generous living areas from a dining/bedroom, bright and spacious living room, to a beautiful kitchen/diner. This home has space that the whole family can enjoy. • Outside you will find a generous South-East facing rear garden with patio seating space, an artificial lawn, and garden room. The front offers another lawn, two generous driveways and a single garage. • This home is perfectly located within walking distance to shops, healthcare services, play areas, and pubs. Nearby you will find excellent schools, along with road and rail commuter links.



Somewhere over the rainbow... is this stunning four-bedroom detached home on Ravenswood Close! This home is like your very own rainbow, bright, inviting, and filled with everything you need to live happily ever after. As you enter, a spacious entrance hall greets you. First up is the first spacious double bedroom, conveniently located with easy access to the downstairs shower room, offering a shower, sink, and W/C. Next, you'll find a versatile dining/bedroom, offering endless opportunities, from a dining room, a fifth bedroom, a home office, or even a playroom for little ones! The bright living room awaits, offering space for the whole family to relax and unwind. The kitchen awaits with beautiful oak-style cabinetry, ample space for appliances and even room for a dining table. Upstairs, you will find two spacious double bedrooms, both with fitted wardrobes, plus a further single bedroom. The family bathroom offers a bath, sink, and W/C. Step outside to a South-East facing rear garden with a lovely patio seating area, a lush artificial lawn, and the garden room, which offers the perfect spot to unwind on a warm summer's evening. The front of the home continues to impress with a lush lawn, two generous driveways with off-road parking, and a single garage. This home is perfectly located in the sought-after Westbury Park, just a short walk from shops, healthcare services, play areas for the little ones, and the popular Westbury Tavern for the grown-ups. Nearby you will find excellent schools, easy access to the A500 and M6, plus Stoke and Longton train stations are within driving distance. Just like the song says, 'If happy little bluebirds fly beyond the rainbow, why, oh why can't I?'. So, why wait for a rainbow when you can make this stunning home yours today!



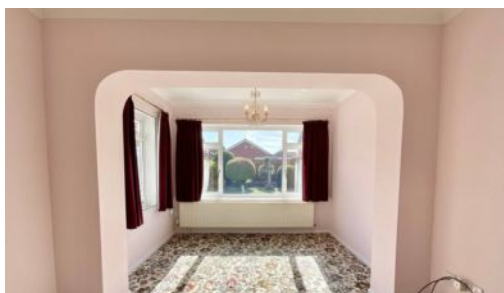
Stunning 4-bed detached home on Ravenswood Close, like a rainbow - bright, inviting, and filled with everything you need. Spacious, versatile, well-located, with lovely garden room. Perfect for family living in sought-after Westbury Park!

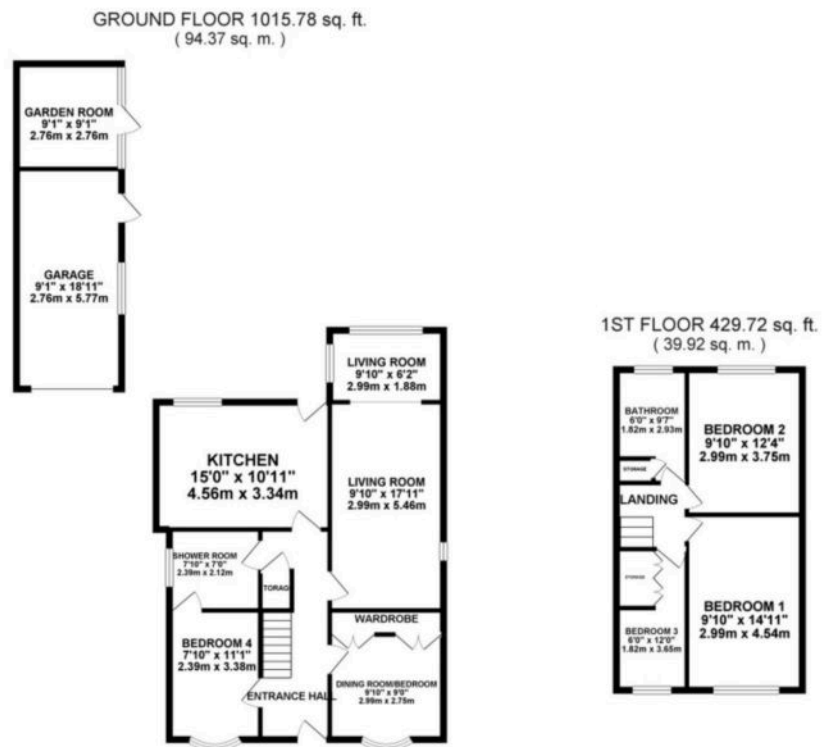
Council Tax band: E

Tenure: Freehold

EPC Energy Efficiency Rating: C

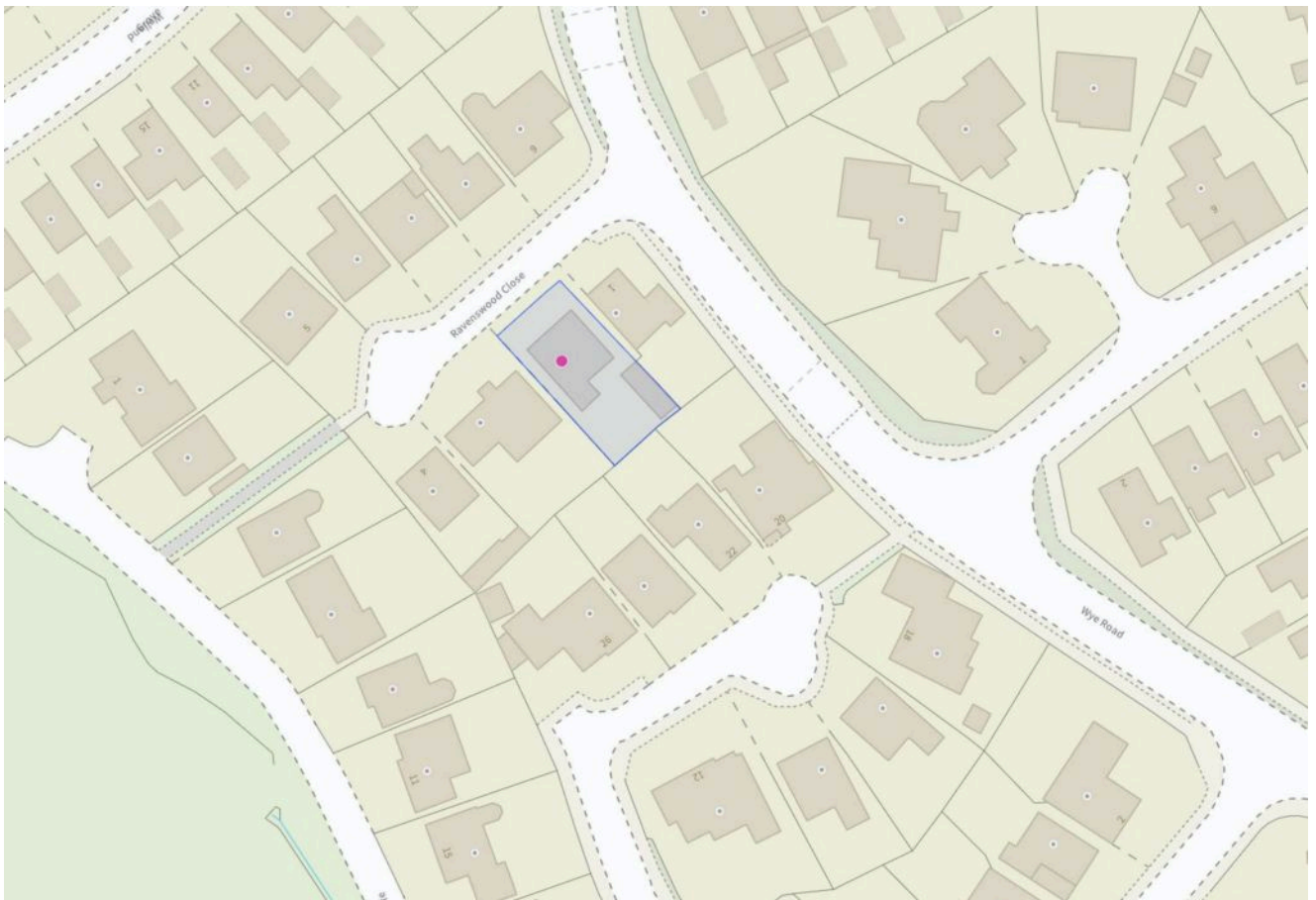
EPC Environmental Impact Rating: C





TOTAL FLOOR AREA : 1445.51 sq. ft. (134.29 sq. m.) approx.

These plans have been made to ensure the accuracy of the floor area contained herein. Measurements of rooms, windows, doors and any other details are approximate and no responsibility is taken for any error or inaccuracy. This plan is for illustrative purposes only and should be used as a guide only. The actual dimensions and details may vary from those shown on the plans. No liability is accepted for any error or inaccuracy. (Made with CAD software)



You can include any text here. The text can be modified upon generating your brochure.

01785 814917