



4 Church Lane, Bowers

£269,950 Freehold



A fantastic opportunity to transform this three bedroom house in Bowers into your next dream home, with breathtaking views, NO UPWARD CHAIN and endless potential you can't go wrong! • Three double bedrooms, a bathroom and multiple storage cupboards on the first floor await your creative touch! • On the ground floor enjoy a circular layout with a lounge, living room and kitchen, while a utility, store and W.C can be accessed from a side hallway. • Outside, enjoy a great sized garden offering beautiful rural views, lawn, patio and a shed. To the front, find some more lawn along with a driveway for parking ease. • Located in Bowers, enjoy semi-rural living with the local school and Church just up the road. Further amenities, schools and travel links can be found in close by Eccleshall



Imagine waking up to the soft chime of distant church bells, birdsong floating through the air and views so show-stopping they practically deserve their own Instagram account. Welcome to your next dreamy destination, a three-bedroom wonder in the heart of beautiful Bowers, and guess what? There's NO UPWARD CHAIN. It's just you, your vision and a whole lot of potential.

From the moment you pull up onto the driveway, inspiration strikes. Step through the front door and into an entrance hall where adventure awaits in both directions, left leads you into the formal lounge, a grand space with dual-aspect windows framing those jaw-dropping rural views and a charming fireplace just begging for cosy evenings. Turn right for a more intimate snug, complete with its own fire-warmed heart, perfect for Netflix marathons or a good book and a cup of something steamy. The kitchen sits at the centre of it all having a practical, circular layout connecting both living spaces, with views out to the garden and beyond that'll make doing the dishes feel practically poetic. Off the kitchen, a second hallway leads to a W.C., a storage room and a utility style room. At the end, swing open the door and step into your personal slice of outdoor heaven.

Upstairs, the dream continues. Three lovely bedrooms await, two spacious doubles and a third with views that might just inspire your next novel or you could turn it into a dressing room/office. There's also a family bathroom, airing cupboard and two handy storage cupboards on the landing to keep the clutter at bay.

Outside you are in for a treat with the generously sized garden with laid lawn, patio for entertaining and a shed for all your treasures. All this, set against a backdrop of countryside views that could convert even the most hardened city-dweller into a countryside dreamer. Tucked away in the peaceful charm of Bowers, with the local school and church just down the lane, you'll find the perfect blend of semi-rural serenity and community connection. Need more? Eccleshall's just a short drive away for all your schools, shops and socialising needs. So what are you waiting for? This house is ready to become your view-tiful, dream-come-true home. Just bring your imagination and a paintbrush. Call us today to book your viewing and start living the dream, one beautiful view at a time.

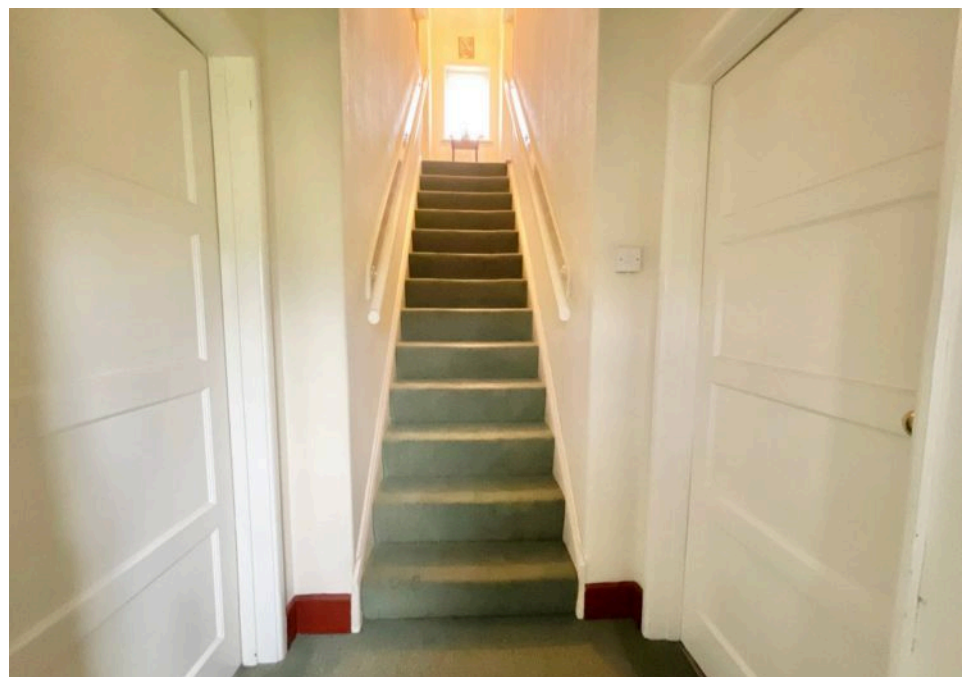


Country living at its best with stunning views and potential galore in this 3-bed dream home in Bowers. Dual reception rooms, spacious kitchen, large garden and great potential for transformation. Ideal for those seeking a peaceful retreat. Call us today to book a viewing! Council Tax band: C

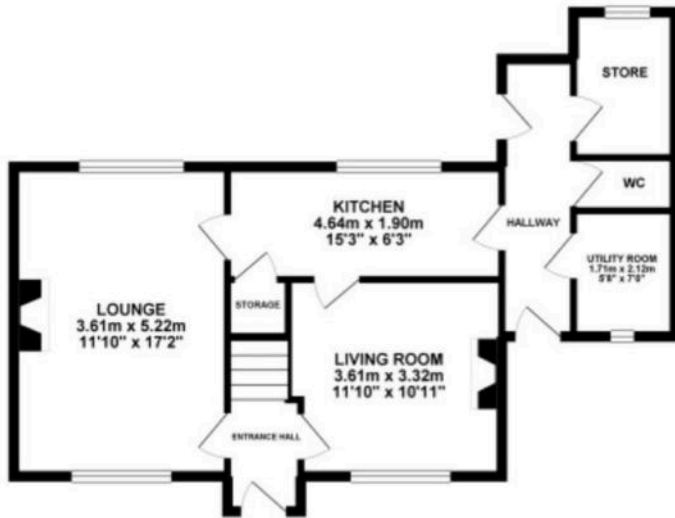
Tenure: Freehold

EPC Energy Efficiency Rating: E

EPC Environmental Impact Rating:



GROUND FLOOR 58.87 sq. m.
(633.68 sq. ft.)



1ST FLOOR 43.08 sq. m.
(463.66 sq. ft.)



TOTAL FLOOR AREA : 101.95 sq. m. (1097.34 sq. ft.) approx.

Whilst every attempt has been made to ensure the accuracy of the floorplan contained here, measurements of doors, windows, rooms and any other items are approximate and no responsibility is taken for any error, omission or mis-statement. This plan is for illustrative purposes only and should be used as such by any prospective purchaser. The services, systems and appliances shown have not been tested and no guarantee as to their operability or efficiency can be given.
Made with Metropix 60325



You can include any text here. The text can be modified upon generating your brochure.

01785 814917