



3 Stallington Mews Galton Croft, Blythe Bridge

£187,500 Leasehold



This stylish apartment is perfect for a first time buyers or even for someone looking to downsize. • Immaculately presented with contemporary fittings, this is show home standard! Just pack your bags and move straight in! • Allocated parking and large communal garden that is looked after for you, no need to lift a finger!! • Mix of the old and the new!! Beautiful grade 2 listed building with a stunning modern open plan living space • Scenic walks are literally on your doorstep – Sought after location with easy access to commuter links



In the beautiful horseshoe shaped mews, in the grounds of Stallington Hall, a treat awaits even the most fussiest of searches and the most detailed of wish lists! A sprawling Grade II listed pad which offers the lightest of homes with a plethora of space and style! If it's a bolt hole you need, this is it! If it's peace and quiet you desire, look no further! If you seek something different and bespoke, we have the answer! Easy living at its very best this home caters for a wide audience, with an open plan living space including lounge, dining and kitchen area, two good sized bedrooms and sleek modern bathroom. Not forgetting the added bonus of use of the communal garden, access to the pond and its wildlife, be amazed at how secluded it feels and there's allocated parking. Situated in a semi rural location but with excellent commuter links and various villages and towns a short distance away! - we know this is just what you are looking for!!

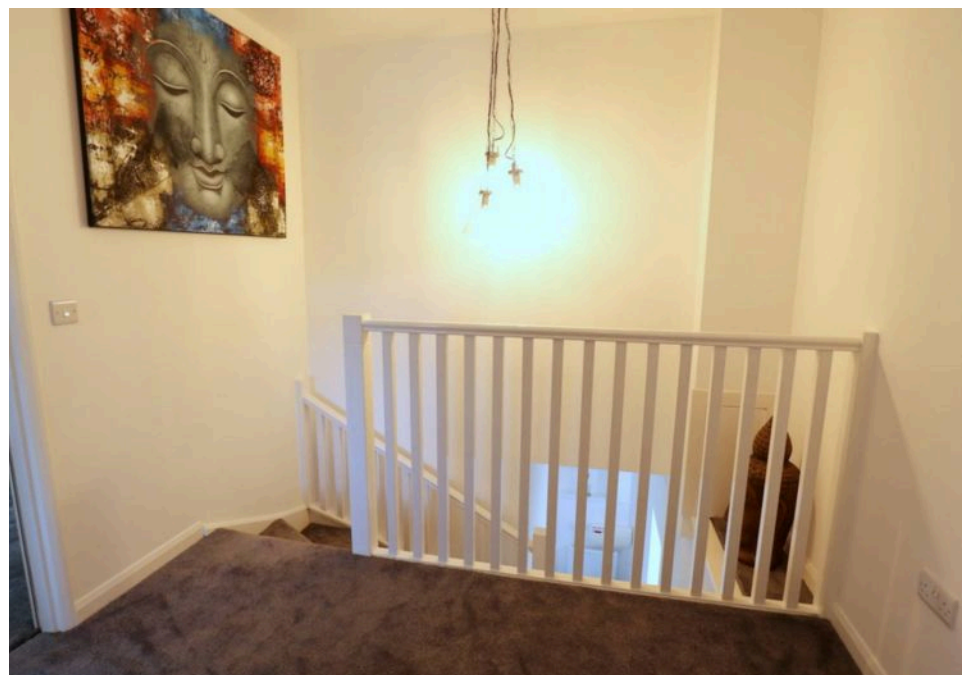


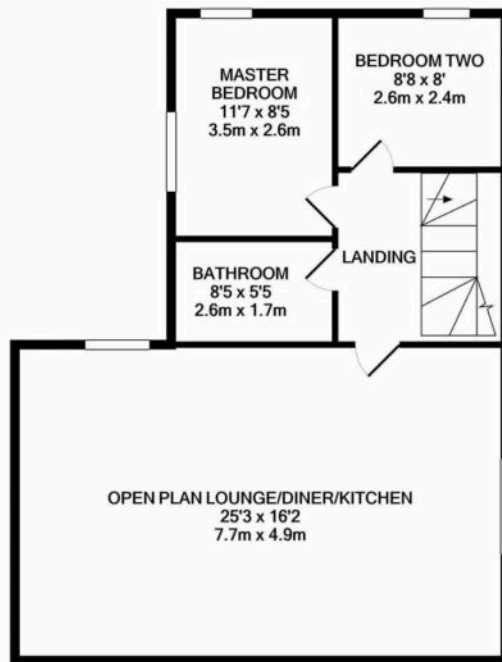
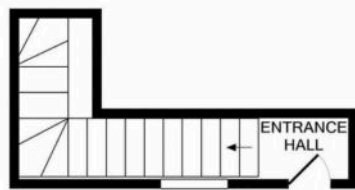
Grade II listed mews apartment in Stallington Hall grounds, offering spacious living in a tranquil setting. Open plan, 2 bedrooms, communal gardens, with great commuter links. An Ideal retreat! Council Tax band: B

Tenure: Leasehold

EPC Energy Efficiency Rating: C

EPC Environmental Impact Rating: C





Whilst every attempt has been made to ensure the accuracy of the floor plan contained here, measurements of doors, windows, rooms and any other items are approximate and no responsibility is taken for any error, omission, or mis-statement. This plan is for illustrative purposes only and should be used as such by any prospective purchaser. The services, systems and appliances shown have not been tested and no guarantee as to their operability or efficiency can be given
Made with Metropix ©2021



You can include any text here. The text can be modified upon generating your brochure.

01785 814917