



3 Millstone Court, Stone

£265,000 Leasehold



Spacious three-bedroom, first floor apartment, generously sized and beautifully laid out for relaxed, easy living. • For sale with NO onward chain. • Two en suite bedrooms means perfect for guests, sharers, or a touch of everyday luxury. • Bright, airy living spaces – Juliet balconies, dual-aspect windows, and an inviting flow throughout. • Town-centre location with two parking spaces.



Welcome to Milstone Court a name that hints at fresh starts and milestone moments, and this fabulous three-bedroom apartment certainly fits the bill. Offered with no onward chain, it's ready and waiting for you to move straight in. Tucked away on the first floor, the apartment is light, spacious, and beautifully laid out. Step inside via the well-kept communal entrance to find a welcoming hallway with soft cream carpets and handy storage cupboards, perfect for keeping things neat and tidy. The generous living room feels bright and homely, with dual windows, a sleek fireplace, and plenty of room to relax or entertain. It flows into the stylish kitchen-diner, where cream cabinetry and integrated appliances blend practicality with polish. French doors open onto a Juliet balcony...ideal for sunny mornings and fresh air with your first cuppa. Back through the hallway, you'll find three bedrooms. The two principal rooms each enjoy their own sleek en suite shower rooms, while the main bedroom also benefits from fitted wardrobes and another Juliet balcony. The third bedroom is light and versatile, a great spot for guests, a nursery, or home office. A separate bathroom with a deep tub adds to the appeal. Outside, there are landscaped communal grounds and two private parking spaces. With Stone's shops, bars, and restaurants just a stroll away, this apartment offers a brilliant blend of space, style, and location. No chain, no fuss – Milstone Court could be your next big step.

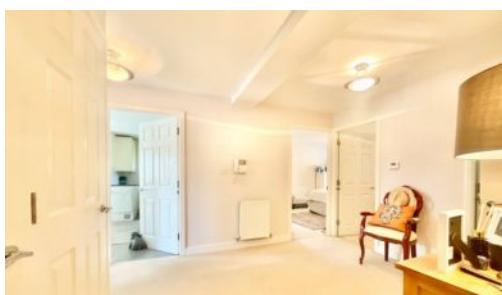


Stylish, spacious three-bed apartment in central Stone with two en suites, Juliet balconies, two parking spaces and no onward chain. A perfect step-up, downsize or lock-up-and-leave. Council Tax band: D

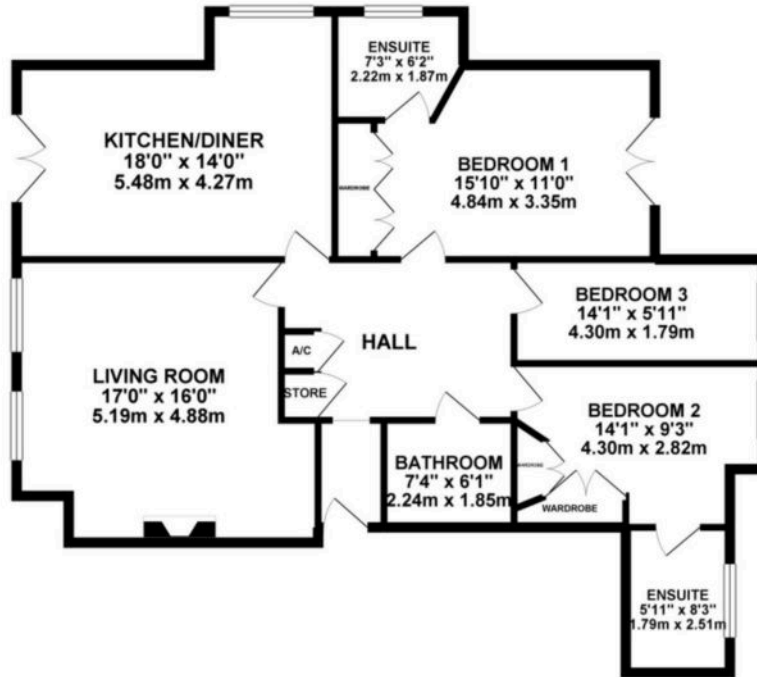
Tenure: Leasehold

EPC Energy Efficiency Rating: B

EPC Environmental Impact Rating:



GROUND FLOOR 1127.71 sq. ft.
(104.77 sq. m.)



TOTAL FLOOR AREA: 1127.71 sq. ft. (104.77 sq. m.) approx.

While every effort has been made to ensure the accuracy of the floorplan contained herein, measurements of doors, windows, rooms and any other items are approximate and no responsibility is taken for any error, omission or misstatement. This plan is for guidance only and should not be used as a basis for any agreement or contract. The services, fixtures and fittings shown here are for information only and are not guaranteed. Please refer to the contract for full details.



You can include any text here. The text can be modified upon generating your brochure.