

Silverbirches Walkmill Drive, Market Drayton

£525,000 Freehold



Enjoy stunning rural vistas from almost every room, with the garden offering an ever-changing landscape that delights in every season. • With four bedrooms, a large kitchen, a dedicated dining room, and a cosy living room, this home is perfect for families or anyone who loves extra space. • The expansive garden, complete with multiple seating areas and a charming summer house, is the perfect spot to unwind, entertain, and soak in the beauty of nature. • The generous master bedroom offers a private retreat with its own bay window, plenty of space, and an ensuite shower room. • From the garage addition to the well-thought-out storage spaces inside, this home is as practical as it is beautiful, making daily life a breeze.



Welcome to Silverbirches, where breath-taking views meet bungalow bliss! This home isn't just a sight for sore eyes; it's a sight you'll want to see every day. As you pull into the spacious driveway, you'll notice there's room for all your vehicles and then some. The attached garage even comes with an extension, perfect for storing all those extra tools and gadgets. Step inside through the welcoming porch and into a generous hallway that sets the tone for the entire home. Straight ahead, you'll find the heart of the house, a bright and beautiful kitchen, complete with cream cabinets, a cosy breakfast bar, and a connecting utility room. Cooking here isn't just a chore, it's a delight. To the left of the kitchen, a stunning dining room awaits. Step down through elegant glass doors into this space, where you can enjoy your meals while gazing out at the rolling countryside through the French doors that open to the garden. At the end of the hallway, the living room is sure to impress, enter through French doors and be greeted by a charming fireplace that beckons you to relax and the views? Simply stunning, with both windows and French doors framing the garden and the lush rural landscape beyond. Next, the master bedroom awaits, a spacious retreat with room for a large double bed and additional furniture. With its own bay window letting in natural light and an ensuite shower, this bedroom is your private sanctuary. Bedroom two, located next to the master, is another double room featuring built-in wardrobes. At the opposite end of the home, you'll find bedroom three, which offers yet another comfortable double room with serene garden views. The fourth bedroom, currently used as a study, has the potential to be a cosy single bedroom or a perfect home office. The family bathroom is the epitome of luxury, boasting both a standalone bath and a separate shower, ideal for relaxing after a long day. Plus, there's a handy storage cupboard to keep things tidy. But the real star of the show? The stunning garden. With panoramic views that change with the seasons, this outdoor oasis is perfect for relaxing, entertaining, and soaking in the beauty of nature. Multiple seating areas invite you to unwind, and behind the garage, you'll discover a charming summer house – your perfect little escape. If you're ready to make Silverbirches your sanctuary, don't miss out on this gem. Contact us today for a viewing and claim this slice of paradise as your own!



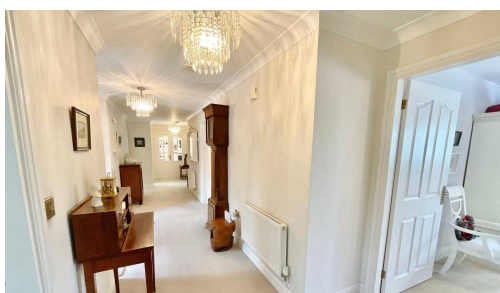
Welcome to Silverbirches, a bungalow with stunning views, spacious driveway, garage extension, bright kitchen, elegant dining room, cosy living room with fireplace, 4 bedrooms, luxurious family bathroom, and a beautiful garden with panoramic views & a summer house. Contact us for a viewing!

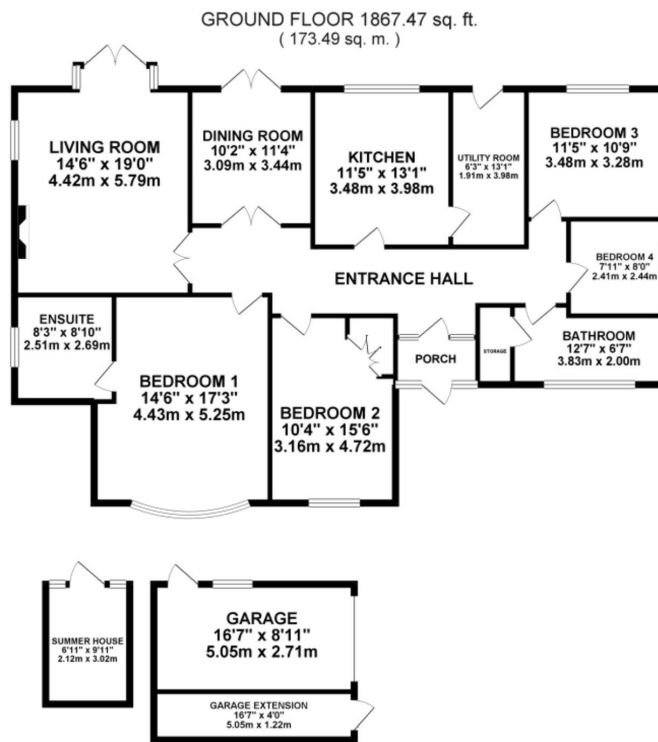
Council Tax band: E

Tenure: Freehold

EPC Energy Efficiency Rating: D

EPC Environmental Impact Rating: D





TOTAL FLOOR AREA: 1867.47 sq. ft. (173.49 sq. m.) approx.
 Whilst every effort has been made to ensure the accuracy of the floorplan contained here, measurements of doors, windows, rooms and any other items are approximate and no responsibility is taken for any error, omission or misstatement. Measurements for accurate purposes only are provided as a guide for any prospective purchaser. The services, systems and appliances shown here are not to be taken as a guarantee as to their operation or efficiency can be given.
 Made with Metaphor 8/2024



You can include any text here. The text can be modified upon generating your brochure.

01785 851886