



5 Ashford Grove, Stone

£195,000 Freehold



Beautifully-presented mews home on sought after Aston Lodge estate near Stone's vibrant centre with shops, supermarkets, eateries and easy commuter links. • Spacious double bedroom with storage, further single bedroom with storage and modern bathroom with bath/shower, sink, and W/C. • Two allocated parking spaces to the front of the home. Plus a lovely rear garden with patio, lush lawn and side access for bins. • Spacious open-plan lounge/diner plus a sleek and practical kitchen with U-shape cabinetry and plenty of space for appliances. • Perfect for first-time buyers, professionals, or a savvy investor looking for their next investment.



Located proudly on the sought-after Aston Lodge estate, this delightful two-bedroom mews home on Ashford Grove is the perfect place to start anew, just like a phoenix rising from the ashes. This home is perfect for a first-time buyer, professionals or a savvy investor looking for their next investment. Step through the front door and into your open-plan lounge/diner – a bright and inviting space with plenty of room for the whole family to relax, recharge and maybe a competitive game night. Flowing into the practical U-shaped kitchen, complete with modern wood-effect worktops, crisp white cabinetry, and room for all your must-have appliances. It's functional, fresh, and ready for all your culinary comebacks. Upstairs, the spacious main bedroom offers a calming retreat with fitted storage. A second single bedroom, also with built-in storage, is perfect for a nursery, home office or hobby space because every phoenix needs a nest for their dreams. The family bathroom is smart and simple, featuring a bath/shower duo, sink, and W/C. Outside, the rear garden is a little sanctuary of its own, with a patio seating area, lush lawn and side access for bins. To the front you can enjoy two off-road parking spaces and easy access into Stone's vibrant town centre, with shops, supermarkets, and eateries right on your doorstep. Plus, commuting is a breeze with the nearby A34, A51, and Stone train station. So, whether you're taking your first step onto the property ladder or looking for a fresh start in a friendly, well-connected location. This Ashford Grove gem is ready to help you rise!

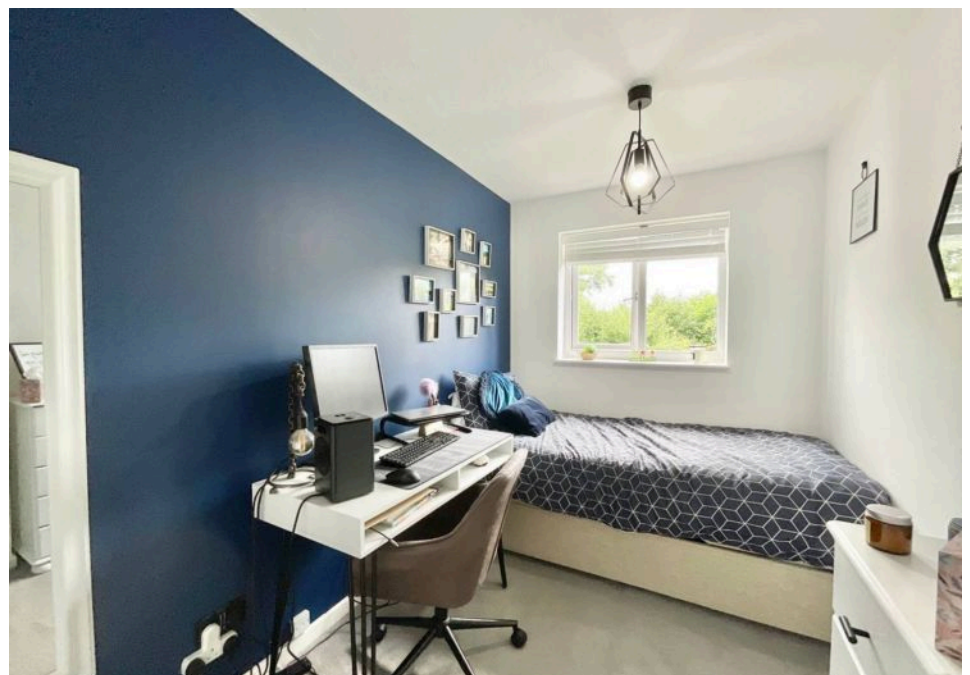


Delightful 2-bed mews home on Aston Lodge estate. Open-plan lounge, modern kitchen, spacious bedrooms, family bathroom, sanctuary garden, parking. Ideal for first-time buyers, professionals, or investors. Well-connected location near shops, eateries, A34, A51, and Stone train station. Council Tax band: B

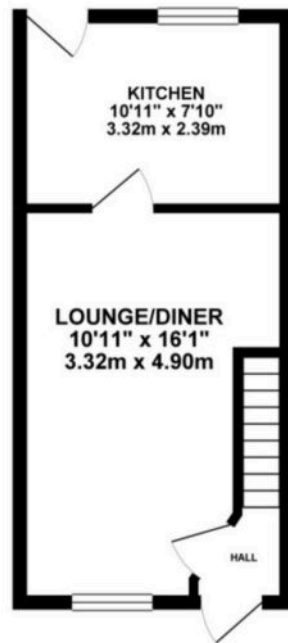
Tenure: Freehold

EPC Energy Efficiency Rating: C

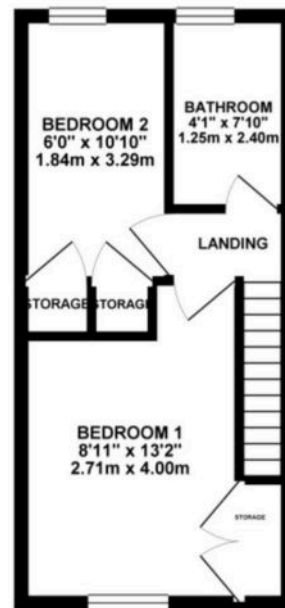
EPC Environmental Impact Rating: C



GROUND FLOOR 260.58 sq. ft.
(24.21 sq. m.)



1ST FLOOR 260.92 sq. ft.
(24.24 sq. m.)



TOTAL FLOOR AREA : 521.49 sq. ft. (48.45 sq. m.) approx.

While every attempt has been made to ensure the accuracy of the floorplan contained here, measurements of doors, windows, rooms and any other items are approximate and no responsibility is taken for any error, omission or misstatement. This plan is for illustrative purposes only and should be used as such by any prospective purchaser. The services, systems and appliances shown have not been tested and no guarantee as to their operability or efficiency can be given.
Made with Hogenix 85012



You can include any text here. The text can be modified upon generating your brochure.

01785 814917