

40 Tean Hall Mills High Street, Tean

£140,000 Leasehold

Versatile multi-level layout including two bedrooms, lounge, kitchen, dining room, bathroom, and mezzanine study area. • Strong commuter links via the A50 with easy access to the M1, M6, Uttoxeter, Cheadle, and surrounding employment centres. • Ideal for professional tenants, holiday lets or resale, with proximity to Alton Towers and the Peak District boosting short-term rental potential. • Spacious loft-style duplex apartment in a beautifully converted Grade II listed former mill, rich in original features. • A designated parking space making parking a breeze.



Begin weaving your future with this light and bright two-bedroom duplex apartment. Step into a bright and character-filled home within a beautifully converted Grade II listed former linen weaving factory. Flooded with natural light from large original windows, this stylish two-bedroom apartment blends historic charm with a fresh, modern finish. Tucked away in the picturesque village of Tean, you'll enjoy the very best of village life, complete with its own mini supermarket, café, eateries, and scenic countryside walks right on your doorstep. When you're ready for a bit more hustle and bustle, the nearby towns of Cheadle and Uttoxeter are just a short drive away, with excellent transport links to the A50 with easy access to the M1 and main convenient bus routes.

Inside, the property offers two generously sized double bedrooms, along with a well-appointed bathroom featuring a bath and shower combo. A spacious living room, offering a cosy retreat to unwind after a long day. At the heart of the home lies the spacious kitchen/dining room, boasting sleek grey worktops and wood-finished cabinetry with ample storage. A concealed storage area behind a closed door is ideal for keeping your kitchen clutter-free, whether you're whipping up midweek meals or hosting a dinner party. There's plenty of space for a large dining table, perfect for entertaining family and friends. Overlooking the dining area is a unique mezzanine study, versatile in its use make this space whatever you desire. Additional storage is available in the airing cupboard, adding to the practical features that make everyday living a breeze.

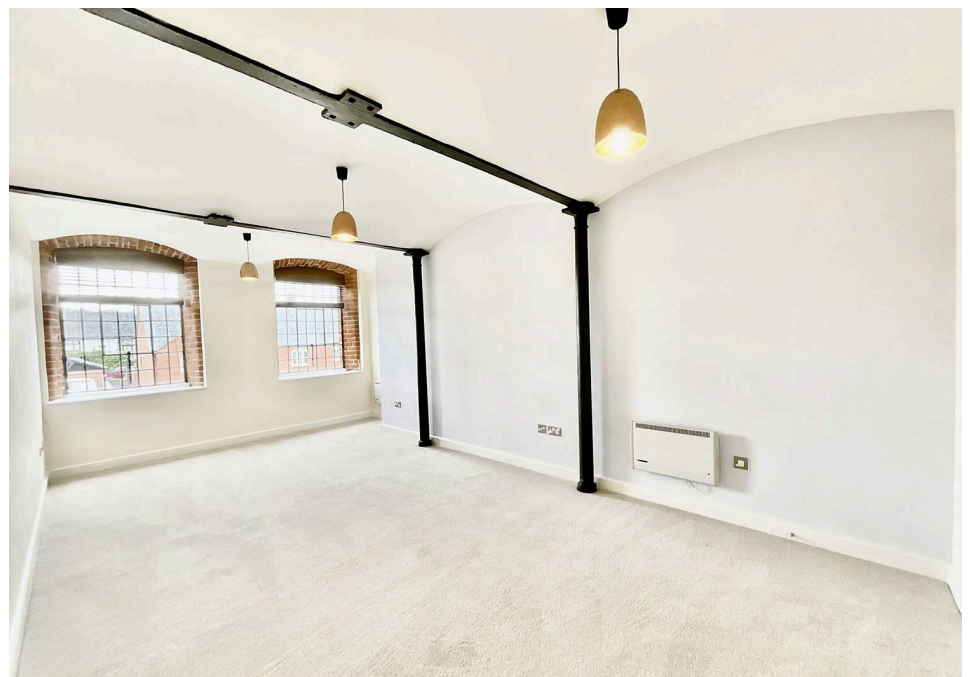
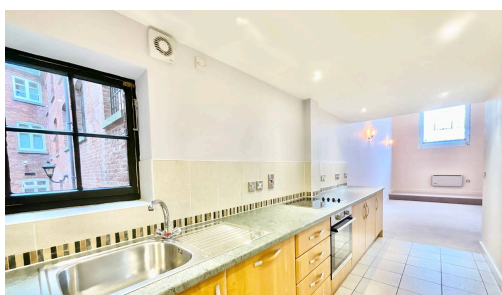
This unique home offers a rare blend of heritage, comfort, and convenience. Book your viewing today and begin your very own "weave of life" in this stunning historic setting.



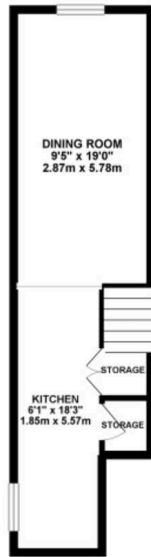
Begin weaving your future with this light and bright two-bedroom apartment. Step into a bright and character-filled home within a beautifully converted Grade II listed former linen weaving factory.

Council Tax band: D

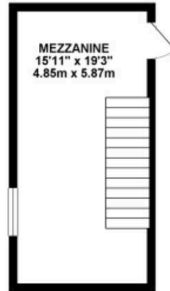
Tenure: Leasehold



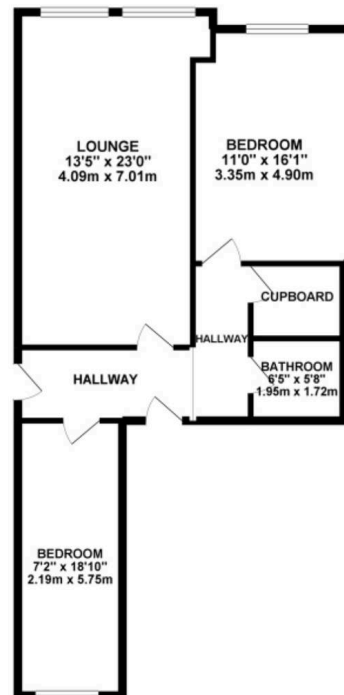
GROUND FLOOR 327.88 sq. ft.
(30.46 sq. m.)



MEZZANINE 182.56 sq. ft.
(16.96 sq. m.)



1ST FLOOR 762.82 sq. ft.
(70.87 sq. m.)



TOTAL FLOOR AREA : 1273.26 sq. ft. (118.29 sq. m.) approx.

Whilst every attempt has been made to ensure the accuracy of the floorplan contained here, measurements of doors, windows, rooms and any other items are approximate and no responsibility is taken for any error, omission or mis-statement. This plan is for illustrative purposes only and should be used as such by any prospective purchaser. The services, systems and appliances shown have not been tested and no guarantee as to their operability or efficiency can be given.
Made with Hogen® ©2015



You can include any text here. The text can be modified upon generating your brochure.