



## Flat 10, Sutherland Court, 179 Longton Road

£199,950 Leasehold



Two generous double bedrooms, a large living room and formal dining space make it ideal for entertaining or relaxing in comfort. • Just moments from Trentham Gardens, with tranquil surroundings and great local amenities.

- No Upward Chain – Move quickly and with ease—there's no chain to hold you back.
- Rare extras like a private garage and separate storage cupboard mean there's room for everything.
- Share of Freehold – Enjoy greater control, fewer complications and a more secure long-term investment.



'Knock, knock!'... 'Who's there?'... 'Opportunity!' We all know how this story ends—and when it comes to Sutherland Court, opportunity doesn't knock twice! Set within a peaceful and prestigious corner of Trentham, just a stone's throw from the scenic delights of Trentham Gardens, this impressive penthouse apartment is a rare find. With two generous double bedrooms, a spacious living room, and a fantastic formal dining room, there's room to relax, entertain and enjoy. The grand entrance hall makes a superb first impression, complete with ample storage, a guest WC, and a stylish main bathroom. Practical perks include a private garage and separate storage cupboard—ideal for decluttering day-to-day life. And the cherry on top? The vendors own a share of the freehold, giving you more control and fewer complications—and what's more, the property is offered with no upward chain, making for a smooth and speedy move.

So, if postcode prestige, peace and tranquillity, and plenty of space are top of your dream list—then this is your wake-up call. This is Sutherland Court. And it won't wait around!





Penthouse perfection in prime  
Trentham! Two double beds,  
garage, storage, share of freehold  
and no chain—just moments from  
beautiful Trentham Gardens.  
Opportunity knocks... don't miss it!  
Council Tax band: D

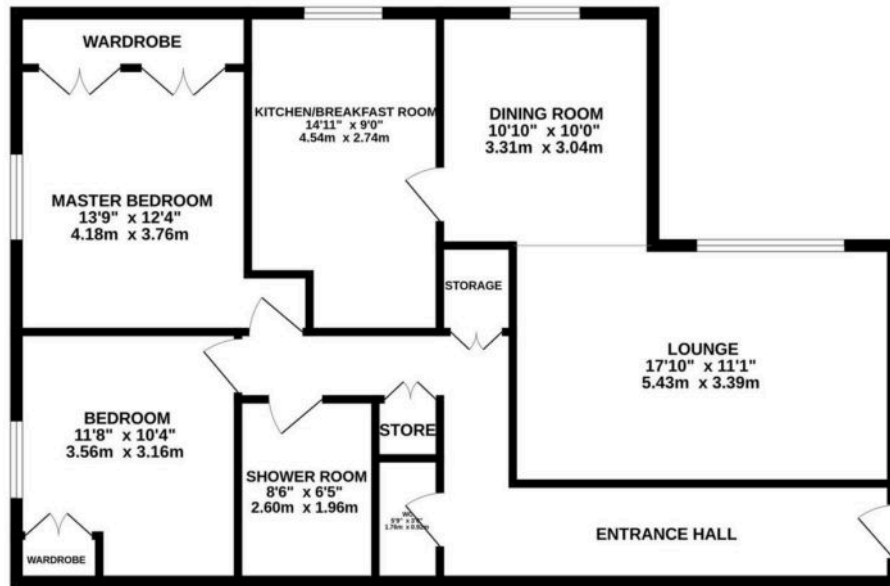
Tenure: Leasehold

EPC Energy Efficiency Rating: E

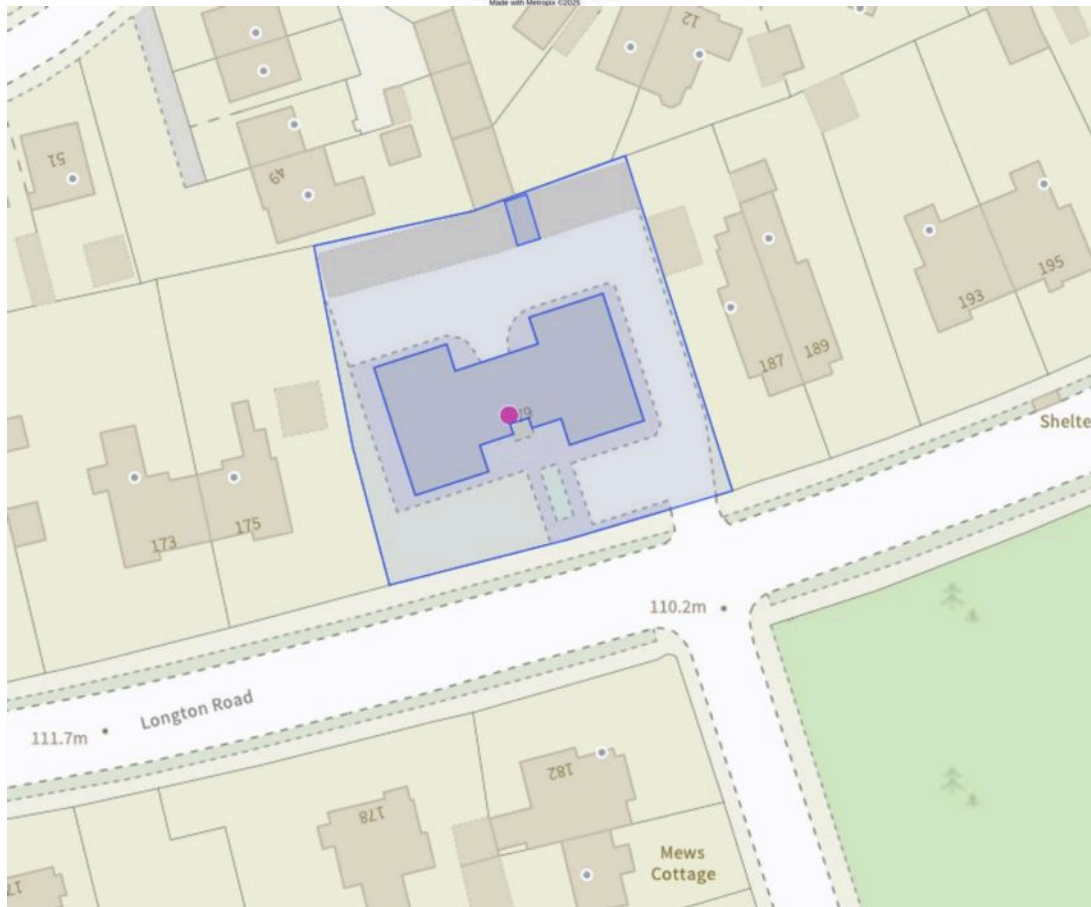
EPC Environmental Impact Rating:  
D



GROUND FLOOR  
969 sq.ft. (90.0 sq.m.) approx.



TOTAL FLOOR AREA: 969 sq.ft. (90.0 sq.m.) approx.  
While every attempt has been made to ensure the accuracy of the floorplan contained here, measurements of doors, windows, rooms and any other items are approximate and no responsibility is taken for any error, omission or mis-statement. This plan is for illustrative purposes only and should be used as such for any prospective purchase. The services, systems and appliances shown have not been tested and no guarantee as to their operability or efficiency can be given.  
Made with Metreplan ©2025



You can include any text here. The text can be modified upon generating your brochure.

01785 814917