



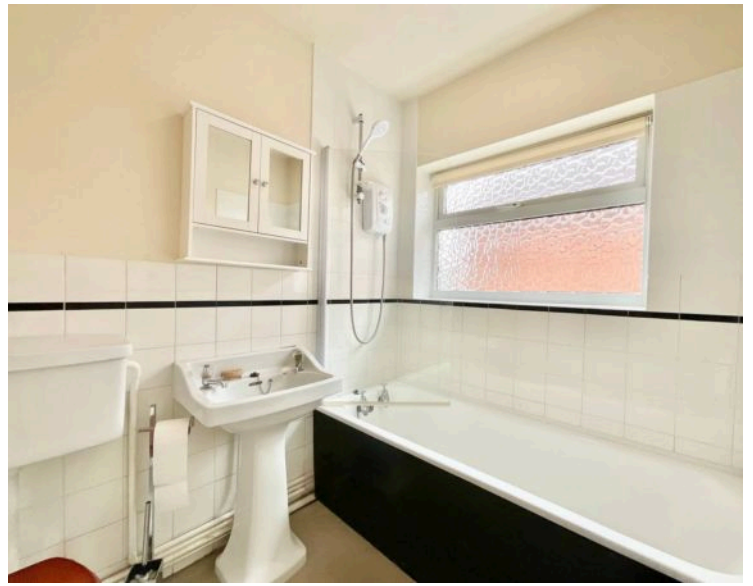
## 93 Meadow Way, Stone

£246,000 Freehold



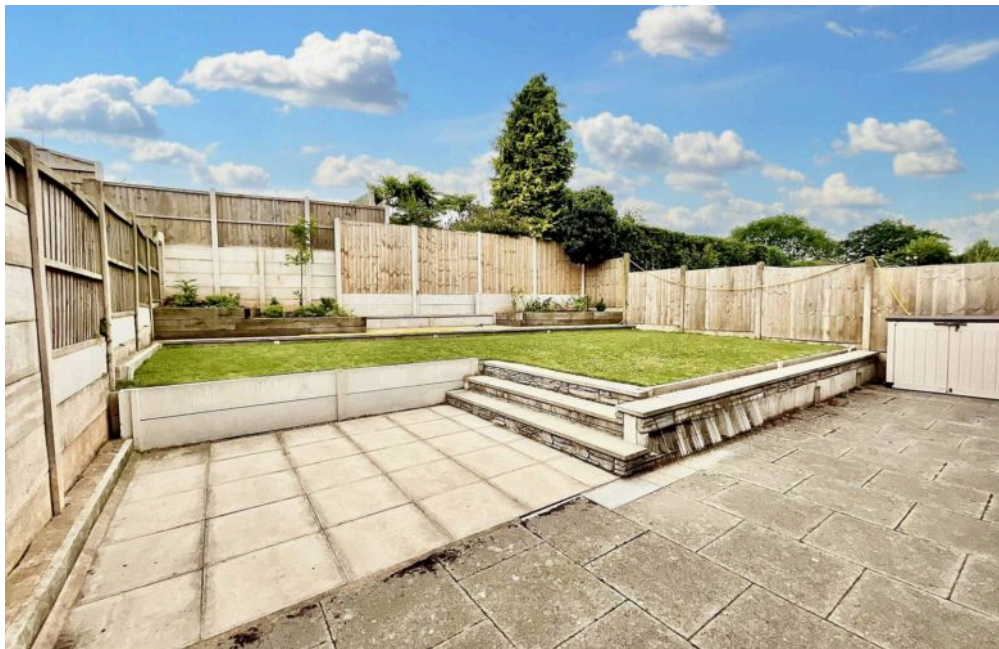
This bungalow offers fantastic potential — update, modernise and shape it into something uniquely yours. • The south-facing garden has been thoughtfully landscaped, providing a private, sunny and low-maintenance space to enjoy year-round. • The extended third bedroom, with sliding doors to the garden, is a wonderfully versatile space for a home office, hobby room or peaceful retreat. • Tucked away in a well-connected part of Stone, you're just a stroll from local shops, handy bus routes and lovely green spaces. • Being offered for sale with NO ONWARD CHAIN.





A fresh Start on Meadow Way...Chain-Free and full of promise. If you've been searching for a blank canvas with good bones and great potential, this three-bedroom bungalow on Meadow Way could be just the beginning. Set in a handy spot close to Stone's local shops, bus routes, and green spaces, this home offers the perfect chance to start fresh, whether you're downsizing, investing, or ready to put your own stamp on a place. Inside, the layout is well-considered: the kitchen sits at the front, ideal for watching the world go by over your morning brew. A generous living room flows through to three bedrooms at the rear, including a third bedroom that was added as part of a previous extension. With sliding doors opening onto the garden, this room makes a wonderful study, snug, or creative space. There's a bathroom with shower over bath, and while the home would benefit from some modernisation, it's clear that what's here is full of promise. Outside, the south-facing garden has been thoughtfully landscaped for easy upkeep, a mix of patio, raised lawn and flowerbeds, all offering privacy and a sunny spot to unwind. To the front, there's ample driveway parking, completing the picture.

This is more than a move, it's an opportunity. A solid home, a great location, and a fresh start waiting to happen. Ready when you are – call now to arrange your viewing.



Chain-free and full of potential!  
This 3-bed bungalow on Meadow Way offers a fresh start with a sunny south-facing garden, ample parking, and scope to make it your own. Don't miss the opportunity!

Council Tax band: C

Tenure: Freehold

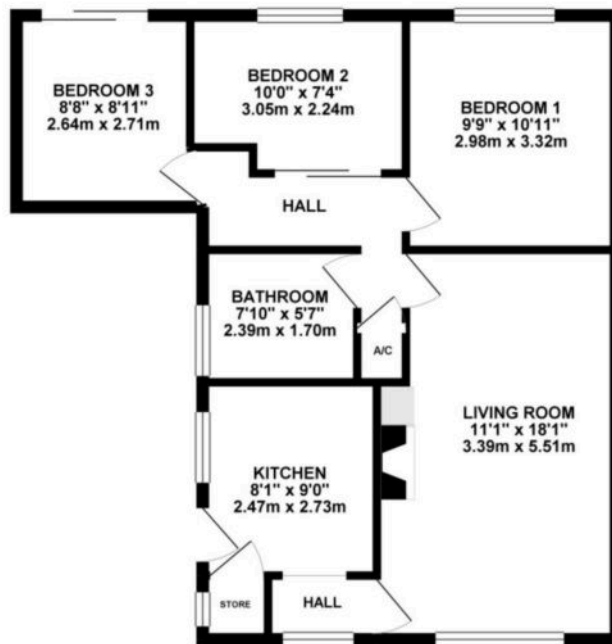
EPC Energy Efficiency Rating: E

EPC Environmental Impact Rating: E

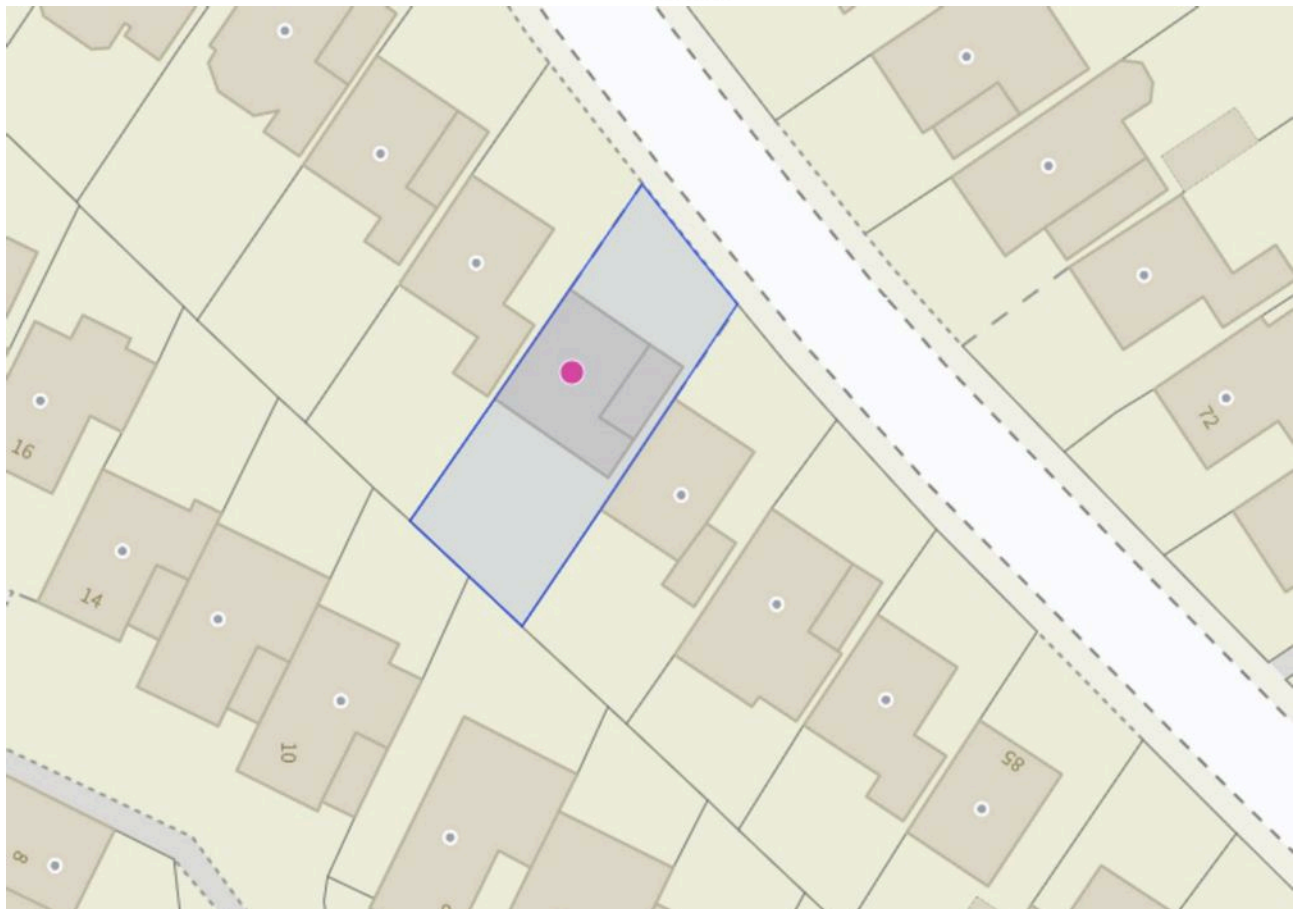




GROUND FLOOR 633.01 sq. ft.  
( 58.81 sq. m. )



TOTAL FLOOR AREA : 633.01 sq. ft. ( 58.81 sq. m. ) approx.  
While every attempt has been made to ensure the accuracy of the floorplan contained herein, measurements of doors, windows, rooms and any other items are approximate and no responsibility is taken for any error or omission in this document. This plan is for Australia purposes only and should be used as such by any prospective purchaser. The services, fixtures and appliances shown here are not guaranteed and no guarantee is to be made as to the accuracy of the plan for the given.  
Made with iStockphoto 800000



You can include any text here. The text can be modified upon generating your brochure.

01785 814917