



## 28 Meadow Way, Tean

£315,000 Freehold

A detached bungalow just a short walk away from the village of Tean, a humming village with independent shops, cafes, eateries, travel links and surrounded by gorgeous Staffordshire countryside. • The Stunning garden- low maintenance artificial grass, a wrap around patio seating area with mature flower beds and shrubs, and your very own secret garden with tiered beds. • A home surrounded by picturesque views, a living room with bay window, well-equipped kitchen and huge conservatory! • The generous slumber accommodation consists of two spacious double bedrooms and a single bedroom that is currently used as a dining room. • A gated driveway and spacious garage with up and over door.





Over the hills—but not too far away—nestled quietly in the village of Tean, you'll find a bungalow that feels a little like a secret waiting to be discovered. Sitting proudly on a generous plot, it gazes out over open countryside, with a nearby river that hums softly in the background, like something from a forgotten page in a well-loved storybook. Tean itself is a charming place, alive with the gentle rhythm of village life—independent shops, warm cafés, welcoming eateries, and well-connected travel links. Yet here, just steps from the heart of it all, you'll find calm, space, and a touch of something timeless. The gated driveway leads you in, offering ample parking and access to a garage and entrance porch. Step inside, and a hallway welcomes you with quiet ease. The living room opens up—a light and restful space, finished in soft neutral tones, with a beautiful bay window that invites in the morning sun. It's the kind of spot you might curl up with a book and a blanket, while the breeze stirs the leaves outside. From there, wander into the kitchen—a practical, thoughtfully laid-out space with plenty of storage and cosy corners for your essential appliances. As you prepare dinner or wash the dishes, you're treated to a view that stretches over the rooftops of Tean and out toward fields beyond—a quiet reminder of the world outside. And then... the heart of the home: the conservatory. Here, the outdoors slips gently inside and a tucked away storage cupboard houses space for your washer and dryer. It's a room where light dances across the floor and the garden feels close enough to touch. Open the French doors, and you step into your very own wonderful garden. The slumber accommodation awaits via a hallway with plenty of storage cupboards and whispers serenity and calm...The master looks out across open fields—peaceful, unbroken, like a view unchanged for years. The second double bedroom offers soft views over the rooftops of Tean, while a third single bedroom (currently used as a dining room) adds flexibility for guests, hobbies, or quiet work. The family bathroom is light and well-appointed, with a vanity hand wash basin with cupboard storage and a bath ideal for a long, bubbly soak after a day in the garden. This is a home for those who love quiet corners, open skies, and the feeling of discovering something special. A home where nature is always just beyond the glass, and where every season brings a new kind of magic. Out here, it's easy to imagine a key hidden in the ivy or a robin flitting from branch to branch. There's artificial lawn for ease, a patio perfect for a morning coffee or twilight chat, and flower beds lined with mature shrubs and climbing blooms. Stone steps lead down to an almost secret garden, tiered beds just waiting to be brought to life—perhaps with vegetables, herbs, or a scatter of wildflowers. And at the far end? A tucked-away footpath that leads you quietly, almost magically, straight into the village. Your quiet life is calling...why wait arrange your viewing today!



A serene detached 3 bed bungalow within walking distance of Tean, countryside views, generous living spaces, a delightful conservatory, and a tranquil garden. The quiet life you've been yearning for! Council Tax band: C

Tenure: Freehold

EPC Energy Efficiency Rating: D

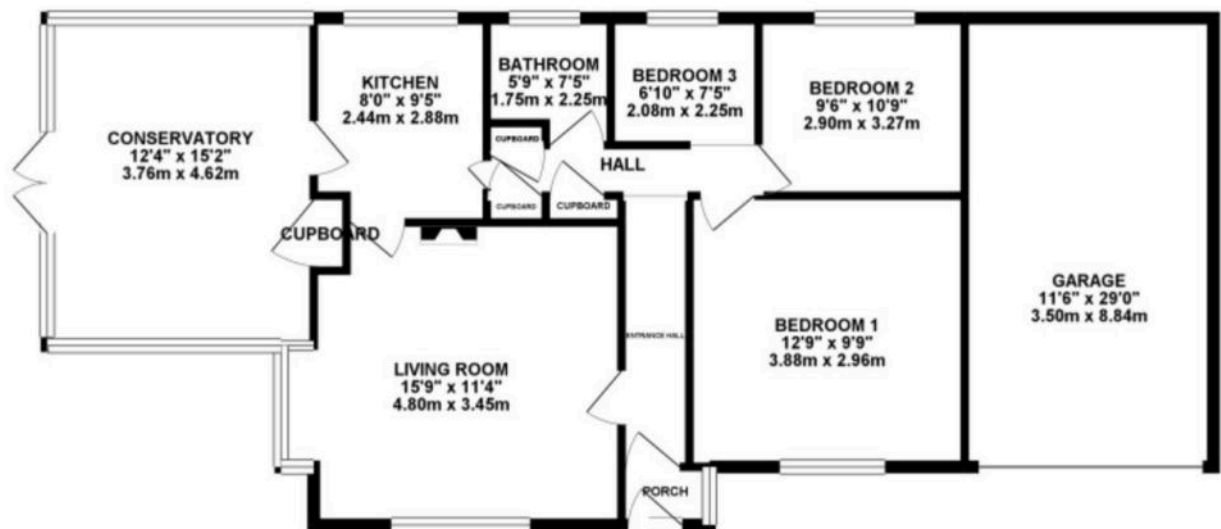
EPC Environmental Impact Rating:







**GROUND FLOOR 1107.74 sq. ft.**  
( 102.91 sq. m. )



**TOTAL FLOOR AREA : 1107.74 sq. ft. ( 102.91 sq. m. ) approx.**

Whilst every attempt has been made to ensure the accuracy of the floorplan contained herein, measurements of doors, windows, rooms and any other items are approximate and no responsibility is taken for any error, omission or mis-statement. This plan is for illustrative purposes only and should be used as such by any prospective purchaser. The services, systems and appliances shown have not been tested and no guarantee as to their operability or efficiency can be given.  
Made with Maptopix ©2025

You can include any text here. The text can be modified upon generating your brochure.