



20 The Close, Weston Coyney

£215,000 Freehold

Excellent location for families in the popular Weston Coyney with surrounding Staffordshire countryside with an array of local amenities, schools and commuter links such as A50/A52. • A South East facing low maintenance rear garden offers a secluded outlook with decked seating area, mature beds and artificial grass. • The entrance hall flows effortlessly into a generous living room, stylish kitchen/diner and conservatory. • The first floor has three spacious double bedrooms, two of which showcase sweeping countryside views and a family bathroom. • This property is located on a quiet cul-de-sac with open aspect frontage and a driveway with flower beds.



Today this could be the greatest day of our lives, JDP welcomes you to this property with open arms... Watch the world come alive in a home where your heart feels most full, a cute semi detached three bedroom home with open aspect frontage and driveway in Weston Coyney. Enter into a hallway and allow yourself to indulge into home comforts, a generous living room awaits with Adams style fire surround with inset flames gas fire and marble style hearth that thrives during a cosy evening with the family, along with a stylish kitchen/diner with cream shaker style cabinetry throughout, a stunning wooden effect work top and designated nooks for much needed appliances, can you see it, can you feel it now?! French doors lead to a conservatory, the perfect spot for a morning brew and a peaceful place to admire your gardening! Ascend the stairs where three spacious bedrooms await. A master bedroom with stunning views over the rolling Staffordshire countryside and a further two bedrooms for family, guests, nursery or creative sanctuary. A family bathroom has shower over bath, a bubbly haven for relaxation, and hand wash basin! Your South East facing low maintenance pocket of nature has a decked seating area, mature flower beds and artificial grass, you can feel it now, a garden of memories, laughter and the perfect BBQ hosting location. Although you are happiest at home Weston Coyney has a range of amenities on the doorstep, with excellent travel/commuter links including easy access to the A50/A52. Let JDP help you make a new start simply give us a call and watch the world come alive today..... why wait to hold this property in your arms?!



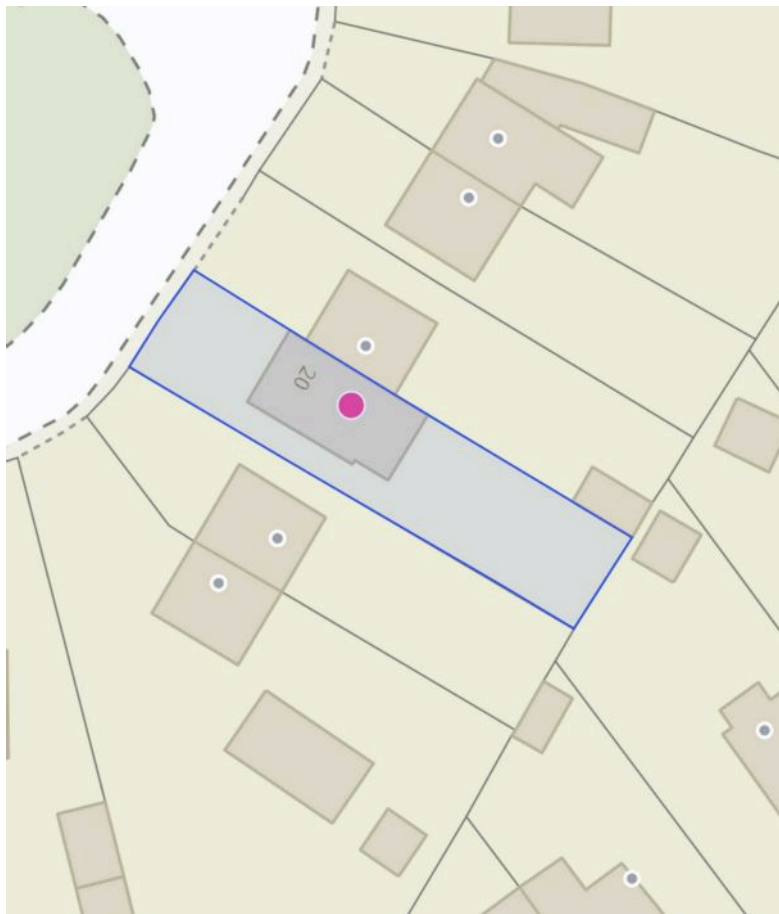
A cul-de-sac worth waiting for, three bedroom semi detached home with open aspect frontage and driveway, kitchen/diner, living room, conservatory, exclusive rear garden..the future is yours to find! Council Tax band: A

Tenure: Freehold

EPC Energy Efficiency Rating: C

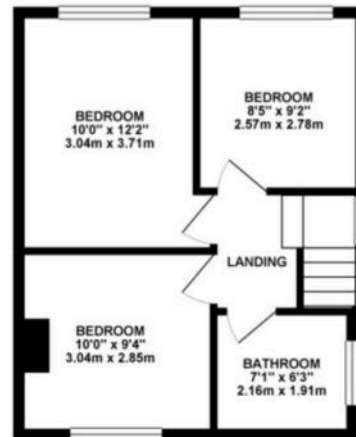
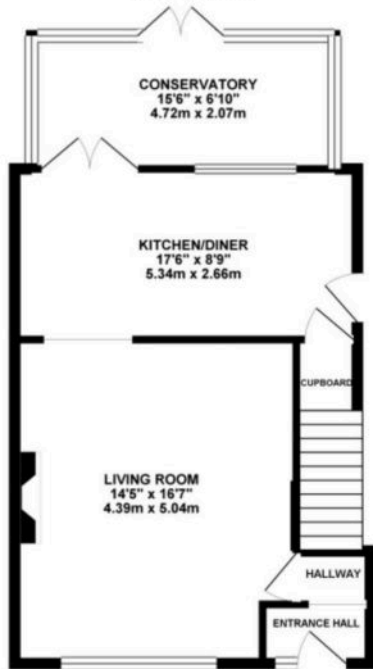
EPC Environmental Impact Rating: D





GROUND FLOOR 539.95 sq. ft.
(50.16 sq. m.)

1ST FLOOR 374.24 sq. ft.
(34.77 sq. m.)



TOTAL FLOOR AREA : 914.19 sq. ft. (84.93 sq. m) approx.

Whilst every effort has been made to ensure the accuracy of the floorplan contained here, measurements of doors, windows, rooms and any other items are approximate and no responsibility is taken for any error, omission or misstatement. This plan is for illustrative purposes only and should be used as such by any prospective purchaser. The network, systems and apparatus shown have not been tested and no guarantee as to their operability or efficiency can be given.
©2022

You can include any text here. The text can be modified upon generating your brochure.