



## 38 Joules Court Crown Street, Stone

£165,000 Leasehold



Beautifully presented third floor apartment in Joules Court with stunning canal side views. • Perfectly located minutes away from Stone's centre with shops, supermarkets, eateries, healthcare services and amazing bus, road, and rail commuter links. • Generously sized bedroom with fitted wardrobes and canal views. The upgraded shower room features a shower, sink, and W/C. • This lovely apartment offers a spacious open-plan living/dining space that's perfect for relaxing with friends and family, plus a practical kitchen for cooking up a storm. • From the amazing views, to the convenient location, this apartment has it all! Plus it is being offered for sale with NO CHAIN!





Ride the wave of canal-side living at Joules Court. Welcome aboard your next adventure—this second-floor stunner at Joules Court is more than just a home; it's your own tranquil mooring spot in the heart of Stone. With a glorious view over the Trent and Mersey Canal, you'll feel the serenity flow through your windows and into your soul every single day. Peaceful? Absolutely. Picturesque? You bet. Prone to unexpected bursts of joy from watching ducks paddle by? We can't promise you won't be. Offered with no onwads chain, this home is ready to whisk you away on a current of calm—without any hold-ups along the way. Step inside and let the good vibes stream in. The open-plan living/dining area is a real splash hit, boasting generous space to relax, entertain, or simply gaze dreamily at the rippling waters below. The U-shaped kitchen is perfectly positioned for cooking up your latest culinary masterpiece. The master bedroom is a true haven, complete with built-in wardrobes and another jaw-dropping canal view (yes, you can wake up to watery bliss *every morning*). The updated shower room offers modern convenience, with a sleek shower, W/C, and sink—everything you need to freshen up after a long day of doing absolutely nothing but enjoying the peace. Lift access makes second-floor living a breeze, while off-road parking keeps life convenient on dry land. And when you're ready to venture beyond your aquatic vista, you're just a short stroll to Stone's buzzing town centre—packed with shops, supermarkets, eateries, and more. Need to travel further afield? With the A34, local bus routes, and Stone train station nearby, you'll be gliding from A to B with ease. This is your chance to dip your toe into a life of calm, charm, and canal-side charisma. Come see it, feel it, and fall in love. Joules Court—Where Life Flows Beautifully.



Experience tranquil canal-side living at Joules Court. Serene third-floor apartment with stunning views, open-plan living, U-shaped kitchen, master bedroom with built-in wardrobes, updated shower room. Lift access, off-road parking, short walk to town centre.

Council Tax band: C

Tenure: Leasehold

EPC Energy Efficiency Rating: B

EPC Environmental Impact Rating: C







Experience tranquil canal-side living at Joules Court. Serene third-floor apartment with stunning views, open-plan living, U-shaped kitchen, master bedroom with built-in wardrobes, updated shower room. Lift access, off-road parking, short walk to town centre.

Council Tax band: C

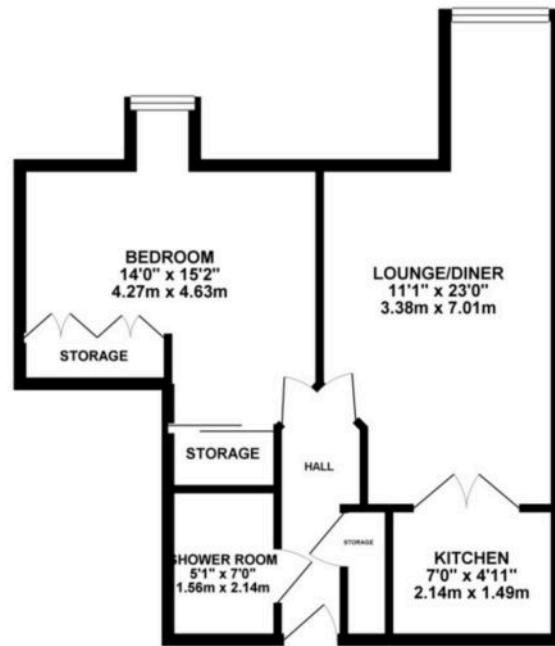
Tenure: Leasehold

EPC Energy Efficiency Rating: B

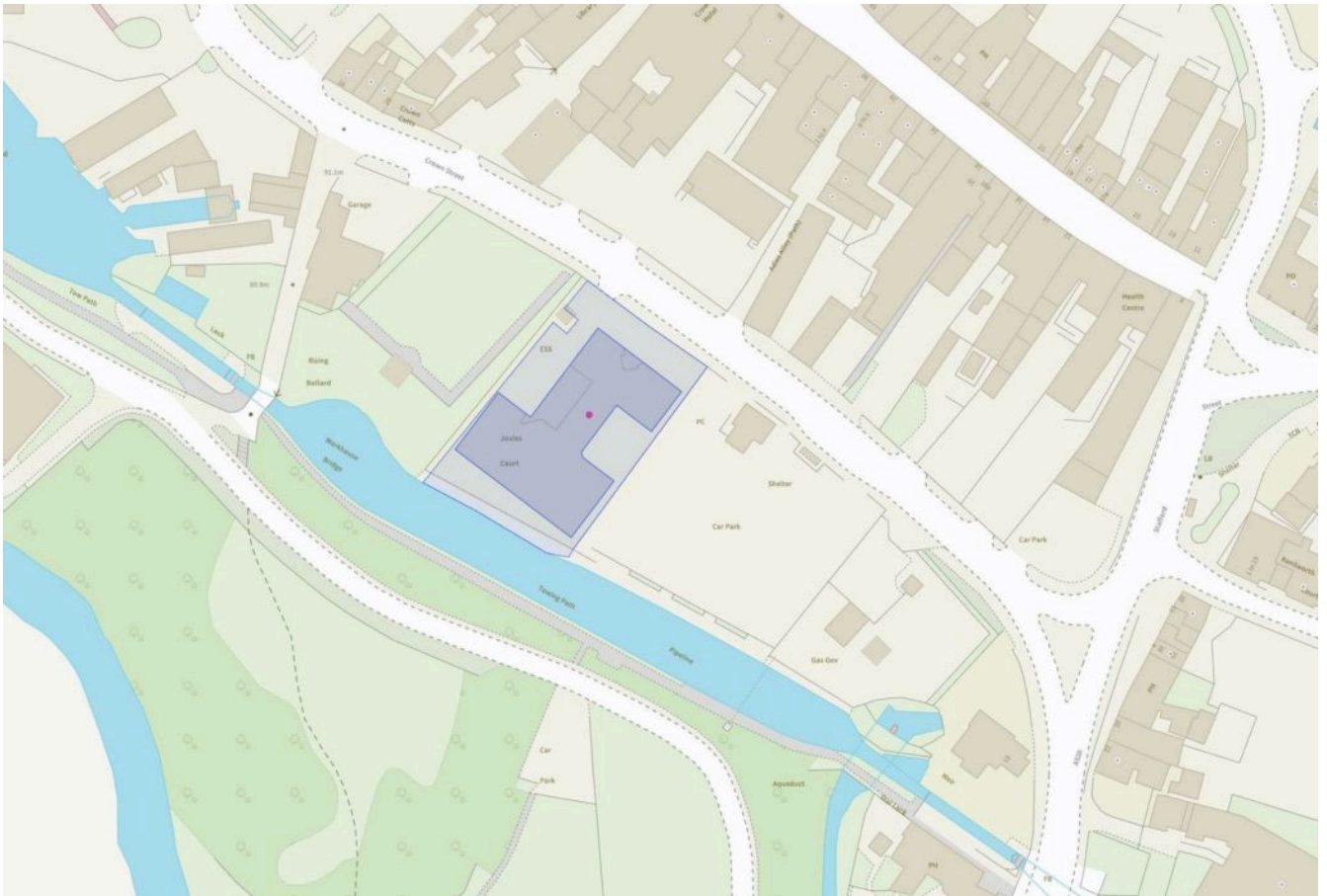
EPC Environmental Impact Rating: C



GROUND FLOOR 518.56 sq. ft.  
( 48.18 sq. m. )



TOTAL FLOOR AREA : 518.56 sq. ft. ( 48.18 sq. m. ) approx.  
 Whilst every attempt has been made to ensure the accuracy of the floorplan contained herein, measurements of doors, windows, rooms and any other items are approximate and no responsibility is taken for any error or omission in this plan. This plan is for illustrative purposes only and should be used as such by the prospective purchaser. The services, content and appearance of this plan and floor plan are not to be relied upon as to the actual state of the property or otherwise. It is the responsibility of the purchaser to verify the accuracy of the floor plan and floor plan.



You can include any text here. The text can be modified upon generating your brochure.

01785 814917