



16 Leek Road, Cheadle

£145,000 Freehold

Town Living, Country Feel. Steps away from Cheadle town centre with excellent schools, shops and supermarkets. • Two-zone garden oasis – paved patio off the conservatory, plus a separate lawned retreat with raised decking, mature trees, shrubs and vibrant planting. • Loft Room, Cellar & Conservatory. Three flexible rooms for hobbies, relaxing, or storage needs. • Stylish Lounge with Log Burner. A warm, inviting space with elegant white shutters throughout and Recently installed windows and external doors • Modern Kitchen with Appliances. Integrated fridge freezer, washer/dryer, induction hob and oven.



This beautiful and charming home is well positioned to Cheadle market town - offering comfort and convenience. Step inside this enchanting, thoughtfully presented two-bedroom mid-terrace, located just minutes from the heart of the popular market town of Cheadle. Inside, the cosy front lounge welcomes you with a feature log burner and elegant white shutters that add privacy and style while letting in the light. The home flows through to a stylish modern kitchen, complete with wood-effect wall and base units, laminate worktops, and a full range of integrated appliances - including fridge freezer, washer/dryer, oven, and induction hob - all framed by calming décor and practical finishes. To the rear, a bright conservatory offers the perfect spot to relax or dine while overlooking garden. Head downstairs to find a fully plastered cellar, a fantastic bonus space ideal for hobbies, extra storage, or a tucked-away workspace. Upstairs are two generous double bedrooms, each with continued white shutters, plush carpets, and space for wardrobes or furnishings. The recently replaced contemporary family bathroom features a shower enclosure, vanity basin, WC, and a useful airing cupboard with built-in storage. At the top of the house, a usable loft room with skylight windows and wood-effect flooring adds even more flexibility - perfect for home working, crafting, or simply a calm space to retreat. With WiFi connectivity throughout and external security cameras already installed, the home is equipped for both modern living and peace of mind. Here it also benefits from recently installed UVPC windows and external doors. Leading on outside- a paved courtyard space with greenery, offering a low maintenance space and perfect spot to relax. Beyond this, step into an extended shared garden featuring a lush green lawn, raised decking, mature trees, and well-established planting. If you're seeking a characterful home with modern touches, ready to move straight into, this could be the perfect match.



Charming mid-terrace with garden, log burner, modern kitchen, conservatory, cellar bonus space, two gardens, two double beds, family bathroom and loft room in the popular Cheadle. Council Tax band: A

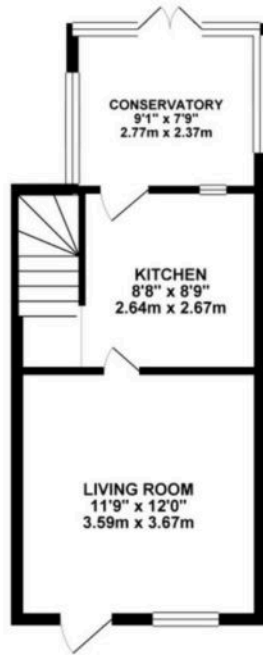
Tenure: Freehold

EPC Energy Efficiency Rating: D

EPC Environmental Impact Rating: E



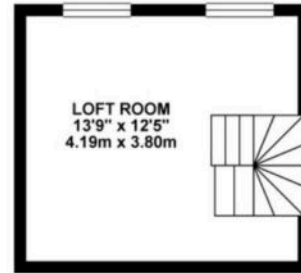
GROUND FLOOR 315.30 sq. ft.
(29.29 sq. m.)



1ST FLOOR 321.89 sq. ft.
(29.90 sq. m.)

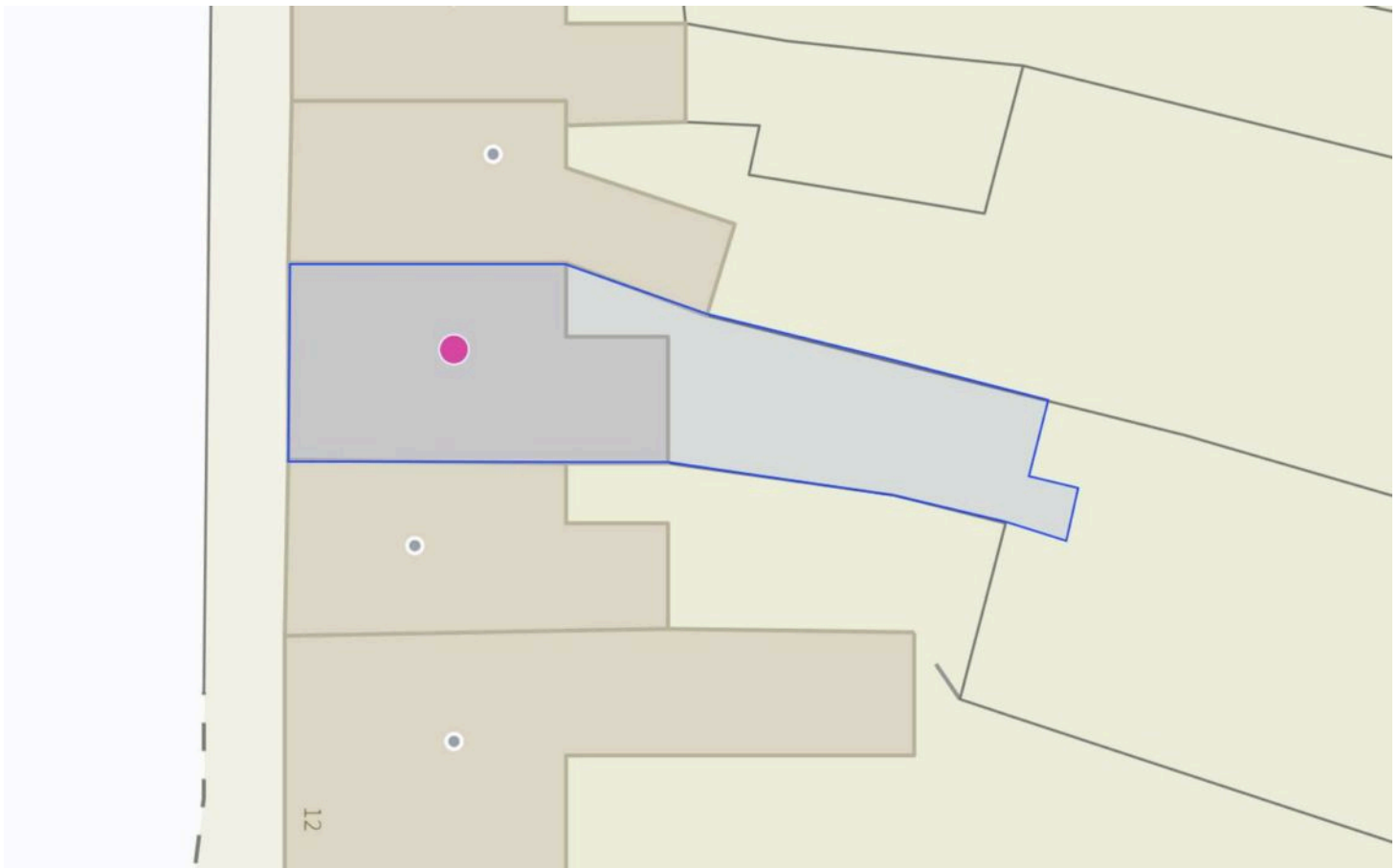


2ND FLOOR 171.34 sq. ft.
(15.92 sq. m.)



TOTAL FLOOR AREA : 808.53 sq. ft (75.11 sq. m.) approx.

Whilst every attempt has been made to ensure the accuracy of the floorplan contained here, measurements of doors, windows, rooms and any other items are approximate and no responsibility is taken for any error, omission or mis-statement. This plan is for illustrative purposes only and should be used as such by any prospective purchaser. The services, systems and appliances shown have not been tested and no guarantee as to their operability or efficiency can be given.
Made with Metropix 6/20/25



You can include any text here. The text can be modified upon generating your brochure.