



## Flat 17, The Moorings Stafford Street, Stone

£129,950 Leasehold



Offered for sale with NO CHAIN!!! • First floor spacious apartment with off-road parking and beautiful communal gardens. • Generous double bedroom with fitted double wardrobe, plus a second single bedroom, ideal for a home office, snug, or hobby room. Plus a bright shower room. • Warm and inviting living room with feature fire surround and balcony overlooking the surrounding gardens, and a practical U-shaped kitchen. This apartment benefits from plenty of additional storage. • Residents lounge overlooking the canal and convenient location within walking distance to Stone's vibrant centre with shops, supermarkets, eateries, healthcare services and local bus routes.





Moooo-ve over, this one right here is udderly brilliant! If you've been *mooo-ving* from one property to the next in search of the perfect pad, your search ends here at **The Moorings**—because this two-bedroom apartment is the cream of the crop! With no chain to hold you back from making your dream home a reality, this first-floor sanctuary boasts all the comforts you desire, alongside off-road parking and picturesque communal gardens. The heart of this apartment beats in the warm and inviting living room, featuring a feature fire surround. The balcony offers a serene spot to sip your morning brew while overlooking the lush gardens that surround the residence. The U-shaped kitchen provides a practical and stylish space to whip up culinary delights, with plenty of storage options to keep your ingredients and gadgets neatly organised. Continue through the home to find a generously proportioned double bedroom with a fitted double wardrobe, offering ample storage to keep your haven clutter-free. Plus, you'll find a versatile single bedroom, perfect for a home office, snug retreat, or dedicated hobby space. The bright shower room adds a touch of modern convenience to your daily routine. Residents of this enchanting abode will also enjoy access to a communal lounge that offers serene views of the tranquil canal. Nestled in a convenient location, everything you need is within easy reach – from Stone's vibrant centre brimming with shops, supermarkets, and eateries to essential healthcare services and local bus routes for seamless commuting. Whether you're looking to relax in the peaceful surroundings or explore the bustling amenities of Stone, this property offers the perfect canvas for you to paint the picture of your ideal home. So, don't be caught napping in the field—book your viewing today and make **The Moorings** your new home before someone else mooo-ves in!



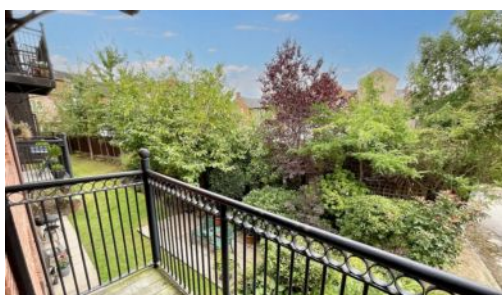
Moooo-ve over, this one right here is udderly brilliant! If you've been mooo-ving from one property to the next in search of the perfect pad, your search ends here at The Moorings.

Council Tax band: B

Tenure: Leasehold

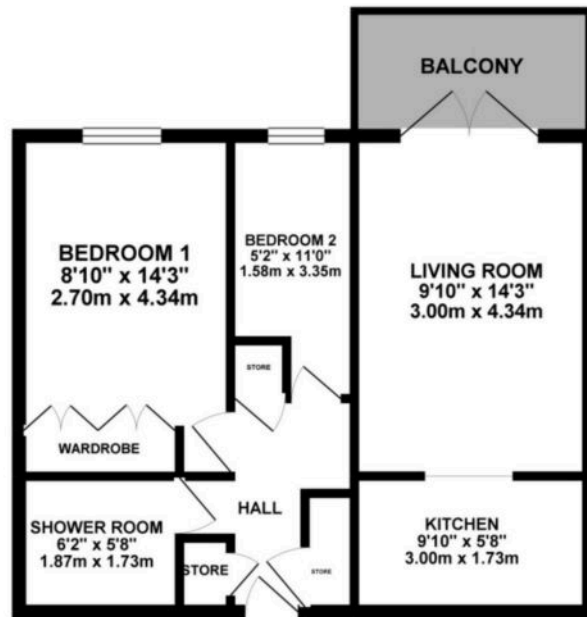
EPC Energy Efficiency Rating: E

EPC Environmental Impact Rating: E





GROUND FLOOR 475.44 sq. ft.  
( 44.17 sq. m. )



TOTAL FLOOR AREA : 475.44 sq. ft. ( 44.17 sq. m.) approx.  
Whilst every attempt has been made to ensure the accuracy of the floorplan contained herein, measurements of areas, volumes, masses and any other data are approximate and no responsibility is taken for any error, omission or misstatement. This plan is for illustrative purposes only and should be used as such for any proposed purchase. The accuracy, quality and appearance of our maps have not been tested and the guarantee, as to their accuracy or otherwise, is not for given.  
Made with Mapbox GL JS



You can include any text here. The text can be modified upon generating your brochure.

01785 814917