

35 Joules Court Crown Street, Stone

£115,000 Leasehold



Second floor apartment in the sought after Joules Court offering a generously sized double bedroom with fitted wardrobes. • Within walking distance of Stone's bustling centre with an array of shops, eateries, supermarkets, cafe's and much more. Plus you have nearby bus routes, the A34, and train station. • Bright and spacious living room with floor-to-ceiling window, a practical U-shaped kitchen, and a generous shower room. • Offered for sale with no chain and this home is ready to move straight in to! • Joules Court boasts its own residents lounge with a piano and cosy fire surround, plus a residents laundry room for added convenience.



We present this delightful one bedroom apartment on the second floor of Joules Court. It's a moment's stroll from Stone's friendly high street, where you can relax in a variety of charming cafes, pubs and coffee shops, with the buses, the A34, and the railway station all conveniently nearby. Lift access makes getting to the second floor easy, where you'll find this thoughtfully designed apartment, with its spacious hallway and two built-in storage cupboards. The living room features a cosy fireplace and a bright floor-to-ceiling window with a view of the garden and local life. In the kitchen, you'll find everything you need fitted in - an oven, a hob and separate fridge and freezer. The bathroom includes a luxuriously roomy shower enclosure and the sizeable double bedroom is made even more spacious by the large fitted wardrobes. But the real appeal of Joules Court is its sense of community - it's a place where you can meet every week in the welcoming residents' lounge for Coffee Mornings and Knit-and-Natter and afternoons of Bingo or a Quiz - or just impromptu get-togethers where you sit and pass the time with new friends. With no chain attached, this apartment is practically begging for you to waltz right in. This is where your happily-ever-after begins!



Step right up and feast your eyes on this delightful one bedroom apartment on the vibrant second floor of Joules Court! Located within a stone's throw (pun intended!) of Stone's buzzing centre.

Council Tax band: C

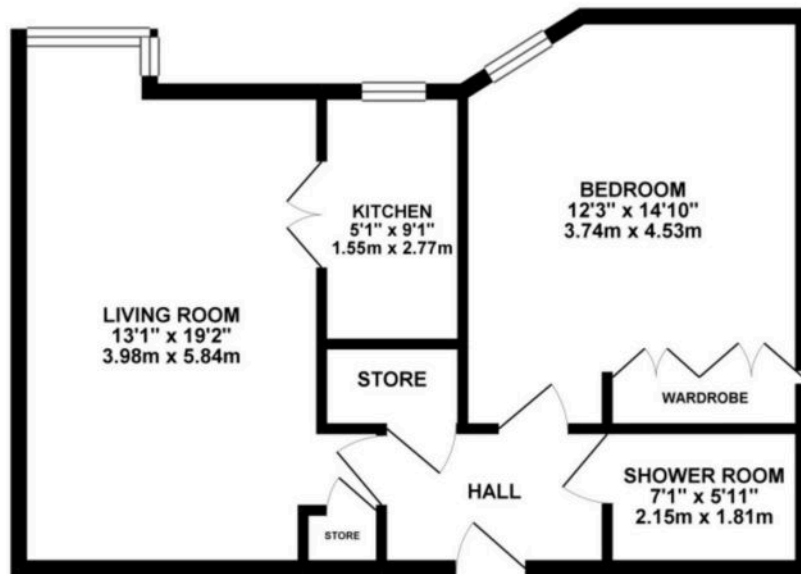
Tenure: Leasehold

EPC Energy Efficiency Rating: B

EPC Environmental Impact Rating:



GROUND FLOOR 522.42 sq. ft.
(48.53 sq. m.)



TOTAL FLOOR AREA : 522.42 sq. ft. (48.53 sq. m.) approx.
Whilst every attempt has been made to ensure the accuracy of the floorplan contained here, measurements of doors, windows, rooms and any other items are approximate and no responsibility is taken for any error, omission or misstatement. This plan is for illustrative purposes only and should be used as such by any prospective purchaser. The services, systems and appliances shown have not been tested and no guarantee as to their operability or efficiency can be given.
Made with Blueprints B20125

You can include any text here. The text can be modified upon generating your brochure.