



Pine Lodge Heath Top, Ashley Heath

£600,000 Freehold



A sprawling bungalow hidden away in a peaceful private location. • Four double bedrooms and two contemporary bathrooms allow plenty of room to relax and unwind. • A generous living area, dining room, kitchen, utility, conservatory and cloakroom keeps things spacious and practical. • Outside, enjoy a garden that wraps around the home, offering laid lawn, patio areas and an array of botanical shrubbery to get creative with. A gated driveway and double garage makes parking a breeze. • Located in Ashley Heath, enjoy semi rural living while still being close by to the local amenities and Primary School in Loggerheads.



Make life grow tall, strong and full of possibility! This impressive four-bedroom detached bungalow is a rare find indeed, offering a harmonious blend of spacious living, stylish finishes and evergreen potential, all wrapped in the tranquillity and privacy of mature trees and natural beauty.

The journey begins in a generous entrance hall, setting the tone for the rest of the home. Multiple reception rooms, including a bright living area and a separate formal dining room, branch out beautifully, with sliding doors in the living room and French doors within an inviting conservatory allowing for a seamless flow to the garden, blending indoor and outdoor living like needles on a pine. The modern kitchen is fitted with integrated appliances, abundant cabinetry and generous counter space, perfectly designed whether you're whipping up a quick bite or hosting a feast beneath the boughs. A utility room sits conveniently next door with direct access to the conservatory, ensuring function keeps pace with form.

Each bedroom offers comfort and character, with large windows, elegant flooring and built-in storage. The principal suite features its own ensuite bathroom, a peaceful retreat within your forest haven. Contemporary bathrooms add a touch of luxury with floating vanities, LED lighting, walk-in showers and indulgent tubs, ideal for soaking away the day. A cosy fireplace warms the living area, while clever storage solutions ensure everything has its place. The classic brick exterior, timeless details and lovingly tended grounds all contribute to Pine Lodge's lasting charm. With many updates already complete and room to branch out with your own ideas, this home is as versatile as it is inviting.

Step into the expansive garden where mature trees, laid lawn, patio spaces and lush greenery form a private retreat. A gated entrance, sweeping driveway and double garage ensure both privacy and convenience. Nestled in Ashley Heath, you'll enjoy semi-rural living surrounded by natural beauty, with Loggerheads amenities and Primary School nearby, as well as Eccleshall, Market Drayton and Newcastle-under-Lyme just a short drive away for further needs.

Plant yourself here, let life bloom and watch your future grow as tall and enduring as the pines that surround you. Call today to arrange a viewing and begin your next chapter.



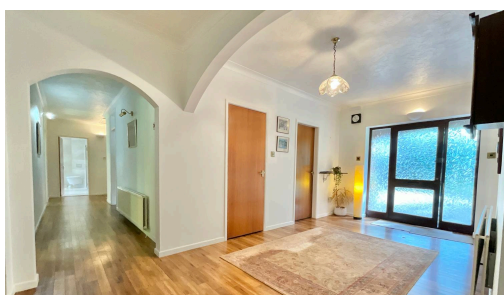
This impressive four-bedroom detached bungalow is a rare find, offering a harmonious blend of spacious living, stylish finishes and evergreen potential, all wrapped in the tranquillity of mature trees and natural beauty.

Council Tax band: G

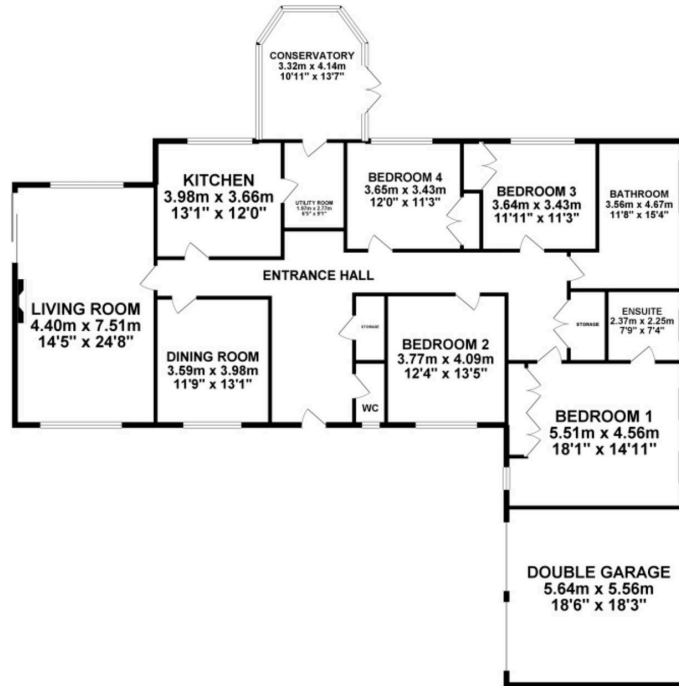
Tenure: Freehold

EPC Energy Efficiency Rating: D

EPC Environmental Impact Rating: D



GROUND FLOOR 238.22 sq. m.
(2564.18 sq. ft.)



TOTAL FLOOR AREA: 238.22 sq. m. (2564.18 sq. ft.) approx.
Whilst every attempt has been made to ensure the accuracy of the floorplan contained here, measurements of doors, windows, rooms and any other items are approximate and the responsibility is taken for any error or omission in this document. This plan is for illustrative purposes only and should be used as a guide only for prospective purchasers. The services, systems and appliances shown have not been tested and no guarantee is given for their operability or efficiency over the years.
 Made with MapInfo 8.00.01



You can include any text here. The text can be modified upon generating your brochure.