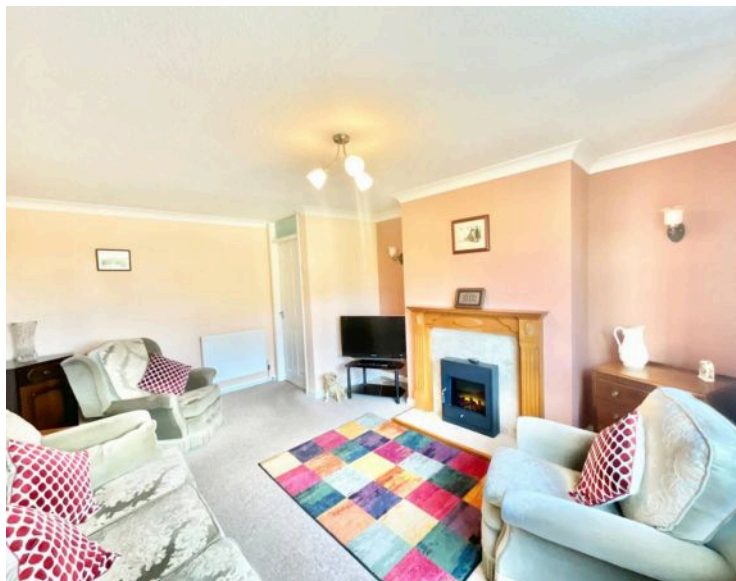




5 Lockwood Road, Kingsley Holt

£240,000 Freehold

Two bedrooms, both overlooking the beautiful rear garden. • A large kitchen/diner with room for a large dining table. The living room sports a wide window and an electric fire surround for a cosy and bright space. • Step outside into the beautiful rear garden, complete with a lush lawn, mature shrubs, and even an apple tree. A paved seating area is perfect for an afternoon brew. There's also a paved front garden. • Tandem driveway with room for multiple cars and a garage currently used as storage. • Located in the village Kingsley Holt. You're surrounded by rural greenery, a short drive from Cheadle's modern convenience and within easy access to the A50 and local bus routes.



Lock yourself in rural serenity and see all that Lockwood Road has to offer. Neatly packaged on one convenient level, located in the village of Kingsley Holt. This delightful bungalow offers countryside charm with modern convenience just minutes away. Only a short drive from **Cheadle** and with easy access to the **A50** and local bus routes, you can enjoy the best of both worlds: tranquil living with urban amenities within easy reach. Set across a single, well-laid-out level, this home welcomes you with a **neat entrance hall**, complete with practical storage for coats and shoes. Step through to the **heart of the home**, a spacious kitchen/diner featuring wood-effect cabinetry, sleek white worktops, and ample space for a good-sized dining table. It's the ideal setting to whip up your favourite meals and entertain friends and family. To the left, you'll find the **cosy sitting room**, bathed in natural light from a wide window stretching almost the full width of the room. An elegant electric fire provides heat and ambience, perfect for relaxing evenings in. The bungalow also benefits from a **versatile additional reception room**, perfect as a home office, guest room, or third bedroom, with glazed French doors opening out to the patio and garden. The **main bedroom** enjoys serene views of the rear garden, while the second bedroom offers comfortable accommodation for family or guests. The **modern bathroom** features a practical walk-in shower for ease and comfort. Step outside into the **beautiful rear garden**, complete with a lush lawn, mature shrubs, and even an apple tree. A paved seating area is perfect for enjoying a morning coffee or afternoon tea. The **front garden** also features attractive paving and mature borders, creating a welcoming first impression. Additional benefits include a **tandem driveway** with space for multiple vehicles, a **garage currently used for storage**, and a peaceful location that makes this home a true countryside gem. If you're seeking a peaceful lifestyle without sacrificing convenience, this charming Lockwood Road bungalow is ready to welcome you home. Schedule your viewing today.



Lock yourself in rural serenity and see all that Lockwood Road has to offer. Neatly packaged on one convenient level, this delightful bungalow offers countryside charm with modern convenience. Council Tax band: C

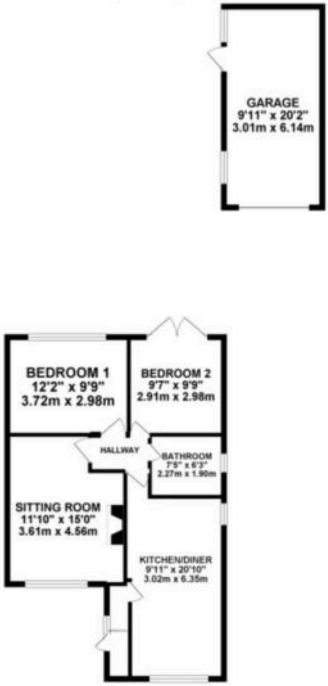
Tenure: Freehold

EPC Energy Efficiency Rating: C

EPC Environmental Impact Rating: D



GROUND FLOOR 848.96 sq. ft.
(78.87 sq. m.)



TOTAL FLOOR AREA : 848.96 sq. ft. (78.87 sq. m.) approx.

Whilst every attempt has been made to ensure the accuracy of the floorplan contained herein, measurements of doors, windows, rooms and any other items are approximate and no responsibility is taken for any error, omission or misstatement. This plan is for illustrative purposes only and should be used as such for any prospective purchaser. The services, fixtures and appliances shown have not been tested and no guarantee is to their condition or otherwise can be given.
Made with HOUZEUP 6/20/21



You can include any text here. The text can be modified upon generating your brochure.