



5 Cressey Close, Stone

£350,000 Freehold



Cressey Place is a beautifully presented detached home, offering space, and comfort, the perfect setting to start your next exciting level in life. • The spacious kitchen/diner area make family living effortless, giving you room to cook, eat, laugh, and create memories, the heart of every great move in your game of life. • The three well-proportioned bedrooms mean everyone gets their own space to dream, play, or work, a flexible layout that adapts perfectly as your story unfolds. • The well-maintained garden is perfect for relaxing, entertaining friends, or simply unwinding outdoors, a peaceful space that evolves with your next chapter. • Located on the friendly Whitebridge Estate in Stone, you're close to schools, shops, and parks, everything a family needs to make every day at Cressey Place feel like a winning move.



Spin the wheel and make your next big move. Welcome to Cressey Close, where the next level of living begins. This beautifully presented, **chain-free three-bedroom detached home** is the perfect move, whether you're upsizing for more space or downsizing for a simpler pace, this home plays your next chapter in style.

Step inside and land on comfort. The **spacious lounge** is perfect for unwinding after a busy day, whether it's movie nights, game nights, or quiet evenings, this is the space where life unfolds square by square. Move through to the **kitchen/diner area**, complete with a **four-burner gas stove, built-in cabinets, ample worktop space, and plenty of room for all your appliances**. It's a space made for everything from relaxed breakfasts to dinner parties.

Advance to the bright and airy **conservatory**, a light-filled space that feels like a bonus square on your board, perfect for entertaining, relaxing, or watching the garden come to life. Thoughtful touches continue with a **downstairs toilet**, featuring a **WC and handwash basin**, keeping life flowing smoothly from one move to the next.

Climb the stairs and level up. Upstairs at Cressey Close is where comfort meets convenience, and every room feels like a win. The **master bedroom** is your very own jackpot square, spacious, bright, and complete with **two built-in storage areas and a ensuite featuring a WC, pedestal handwash basin, and shower** for those get-up-and-go mornings.

Land next on the **second double bedroom**, a warm and welcoming space with **built-in storage**, ideal for children, guests, or anyone who needs a little extra space. Then there's the **versatile single bedroom**, featuring **fitted cabinets** that make it perfect as a home office, study, kids' room, or guest space, a flexible square that adapts as your story evolves.

Step outside and take your final turn. The garden at Cressey Close is your very own bonus round, well-kept, and ready for sunny mornings or relaxed afternoons. With an **attached garage** (internal and external access) and **driveway parking**, convenience is always on your side.

Set within the sought-after Whitebridge Estate in Stone, Cressey Close puts you right in the heart of where life happens. Just a short drive from Stone town centre, you'll find a lively High Street filled with independent shops, cafés, bars, and restaurants, plus a vibrant social calendar that keeps the community buzzing year-round. When it's time to travel further afield, excellent commuter links connect you easily to the A34, A50, and M6, with a mainline train station in Stone offering direct access to nearby Stafford and beyond.

Wherever life takes you next, Cressey Close is your perfect move, a home where every square brings you closer to the life you've been dreaming of.



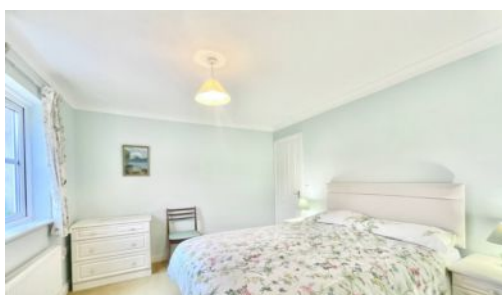
Beautifully presented 3-bed detached home with spacious lounge, modern kitchen/diner, bright conservatory, ensuite master, garage, garden, and great location on Stone's Whitebridge Estate.

Council Tax band: D

Tenure: Freehold

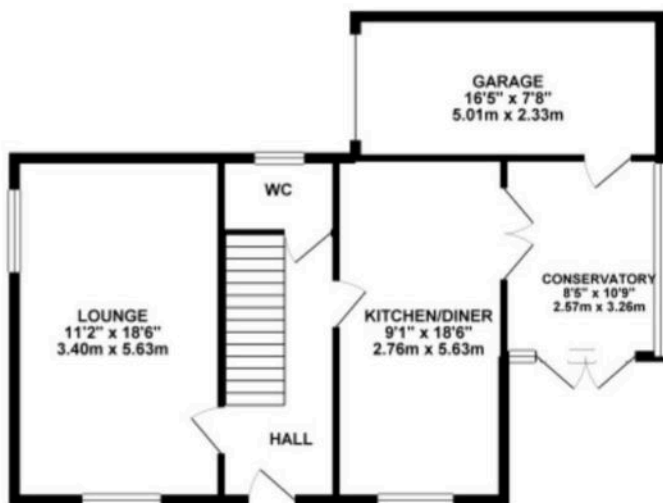
EPC Energy Efficiency Rating: C

EPC Environmental Impact Rating:

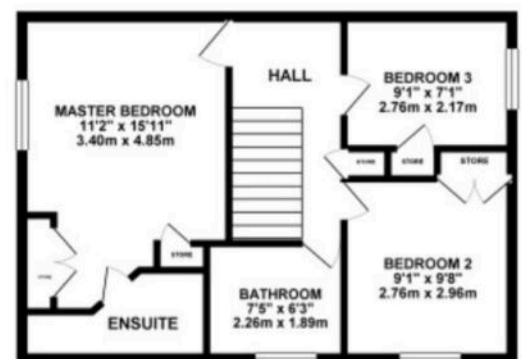




GROUND FLOOR 703.53 sq. ft.
(65.36 sq. m.)



1ST FLOOR 486.52 sq. ft.
(45.20 sq. m.)



TOTAL FLOOR AREA : 1190.06 sq. ft. (110.56 sq. m.) approx.

Whilst every attempt has been made to ensure the accuracy of the floorplan contained here, measurements of doors, windows, rooms and any other items are approximate and no responsibility is taken for any error, omission or mis-statement. This plan is for illustrative purposes only and should be used as such by any prospective purchaser. The services, systems and appliances shown have not been tested and no guarantee as to their operability or efficiency can be given.
Made with Metropix ©2025

You can include any text here. The text can be modified upon generating your brochure.

01785 814917