



## 5 Acorn Close, Loggerheads

£215,000 Freehold



A delightful two bedroom bungalow is situated in the highly desirable area of Loggerheads. Conveniently situated near transport links, the local public house and an Ofsted "outstanding" rated school. • Upon entry to the home, the kitchen is found to the left with space for integrated white goods and vast amounts of storage, this makes for an ideal amount of room for a couple/small family. • This home offers a comfortable and spacious living room, with plenty of room for dining with family and friends. This room has great natural lighting and benefits from a centrally placed fireplace. • The master bedroom offers a great amount of space and benefits from a built in wardrobes with sliding mirrored doors, great for storage and organisation, overlooking the garden space. • The second bedroom can be used as both a bedroom or an office space, great for those working from home and needing



This delightful two bedroom semi-detached bungalow is located in the highly desirable area of Loggerheads, offering a perfect blend of comfort and convenience for a couple or small family. Upon entering the property, you are greeted by a well-appointed kitchen situated to the left of the entrance, featuring space for integrated white goods and ample storage space that caters to all your culinary and organisational needs. The spacious living room provides a welcoming atmosphere, ideal for both relaxation and entertaining, and benefits from generous natural light as well as a centrally placed fireplace that adds a cosy focal point to the space. The layout of the living room allows for a dedicated dining area, making it perfect for hosting family and friends. The master bedroom is generously sized and features built-in wardrobes with sliding mirrored doors, providing excellent storage solutions and helping to keep the space organised and clutter-free. This bedroom overlooks the garden area, offering a pleasant and peaceful outlook. The second bedroom is versatile and can easily function as either a comfortable guest room or a practical office space, ideal for those who work from home or need additional room for hobbies and activities. This second bedroom also provides direct access to the private garage, ensuring convenience and secure storage. The family bathroom is thoughtfully positioned for easy access from all rooms and features frosted windows that allow for plenty of natural light while maintaining privacy. The property is conveniently located near excellent transport links, the local public house, and a highly regarded Ofsted "outstanding" rated school, making it an excellent choice for families seeking quality education and a vibrant community atmosphere. With its well-designed layout, modern features, and sought-after location, this bungalow presents a wonderful opportunity to enjoy comfortable living in a popular neighbourhood. Whether you are downsizing, looking for your first home, or seeking a property with flexible living options, this home offers everything you need for a relaxed and enjoyable lifestyle. Early viewing is highly recommended to fully appreciate the quality and appeal of this lovely bungalow in Loggerheads.

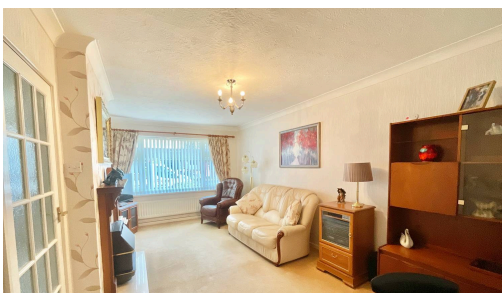


Council Tax band: B

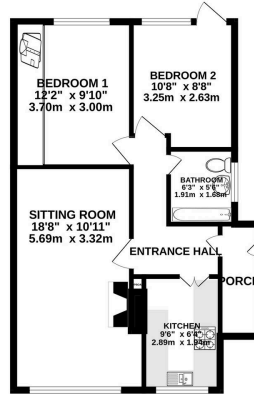
Tenure: Freehold

EPC Energy Efficiency Rating:

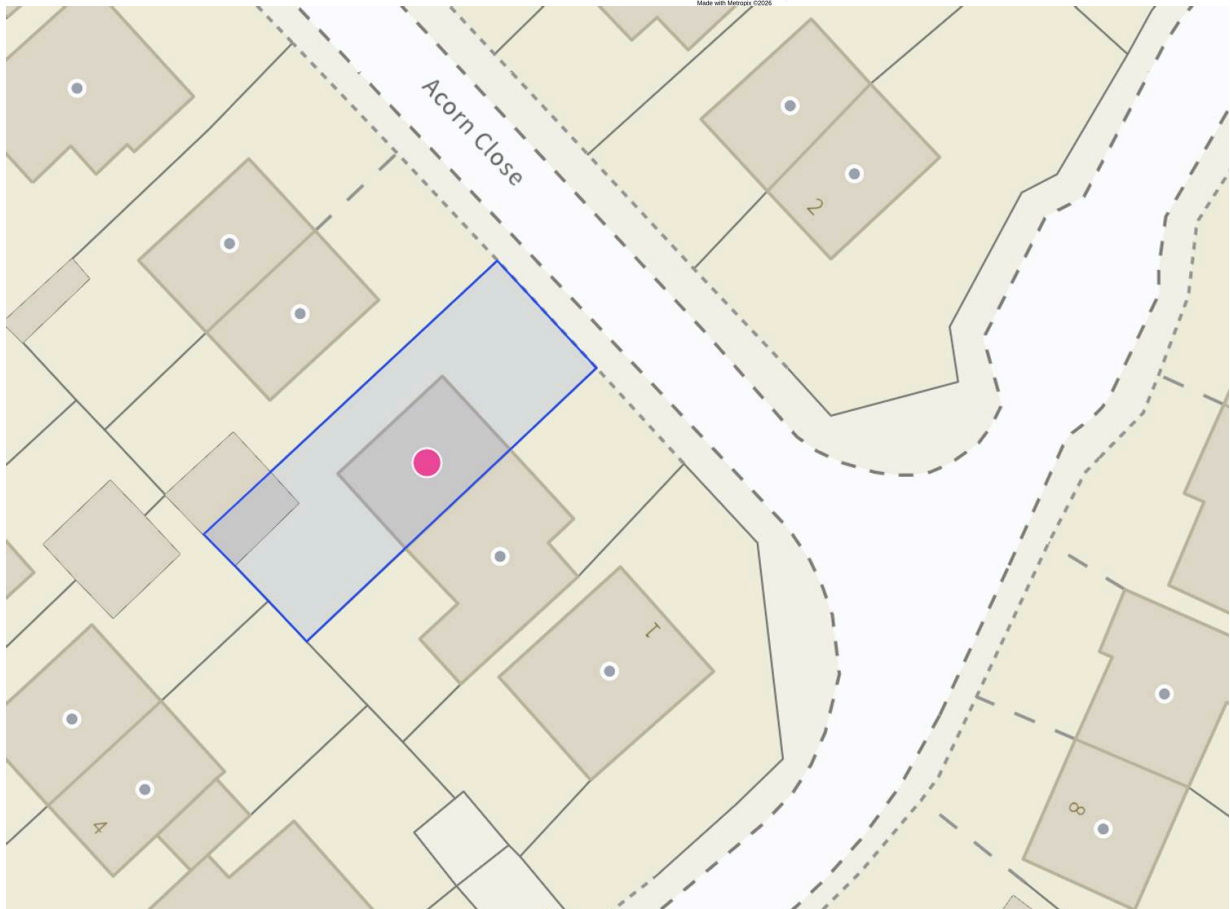
EPC Environmental Impact Rating:



GROUND FLOOR  
729 sq.ft. (67.8 sq.m.) approx.



TOTAL FLOOR AREA: 729 sq.ft. (67.8 sq.m.) approx.  
Whilst every attempt has been made to ensure the accuracy of the floorplan contained here, measurements of plots, windows, rooms and any other items are approximate and no responsibility is taken for any error, omission or mis-estimate. This plan is for illustrative purposes only and should be used as such by any prospective purchaser. The services, systems and appliances shown have not been tested and no guarantee is given as to their operability or efficiency over time.  
Made with MetreX 02/05



You can include any text here. The text can be modified upon generating your brochure.