



14 Jonathan Road, Stoke-On-Trent

£450,000 Freehold



Four-bedroom detached home on a sought-after corner plot with South-facing views and perfectly suited for DIY enthusiasts. • Spacious layout with living room, dining room, conservatory, and versatile family room/study. • Large master bedroom with fitted wardrobes and en suite, plus three additional double bedrooms and a family shower room. • South-East facing garden with patio, lawn, catio, and open field views to the rear. • Tandem driveway, double garage, and prime location near Trentham Gardens and transport links.



Once upon a time (not so very far away, on Jonathan Road), a rather special opportunity appeared, and no, there is no fairy godmother required. This four-bedroom detached home sits proudly on a sought-after corner plot, has stunning South-facing views, is full of potential and is ready to be transformed.

Enter into a spacious entrance hall, leading you throughout this generous home. The spacious living room provides ample room for relaxing with both friends and family and has a seamless flow into the dining room. To the rear, the conservatory awaits with floor-to-ceiling windows and two glazed doors leading to the garden. This home also boasts a versatile family room, perfectly suited as a study, a playroom for little ones, or a serene snug. The kitchen offers ample cabinetry space with room for a range of appliances and an under-stairs storage cupboard. Completing the ground floor is a handy W/C.

Upstairs is home to an expansive master bedroom with fitted wardrobes and an en suite shower room; three further double bedrooms await, two of which have additional fitted storage. The family shower room features a sink, W/C, and a corner shower.

Continue outside to a stunning South-East facing rear garden with a neat patio seating space, a lush grass lawn, a surrounding patio, and, of course, the beautiful field views to the rear. To the front, a beautifully maintained grass lawn leads to a grand portico entrance, while the side of the home offers a generous tandem driveway and a double garage.

Location

Trentham lies to the **South of Stoke-on-Trent** and offers a perfect mix of modern living, green surroundings and excellent amenities. Known for its attractive residential streets and family-friendly atmosphere with local schools, including well regarded **Trentham Academy** and several highly rated primaries

At the heart of the area is **Trentham Gardens and Shopping Village**, a renowned destination featuring independent boutiques, restaurants, cafés, a garden centre and the award-winning Trentham Estate – ideal for walks, leisure and family days out. Additional amenities include shops, bars and eateries as well as the popular 18-hole Trentham Golf Club.

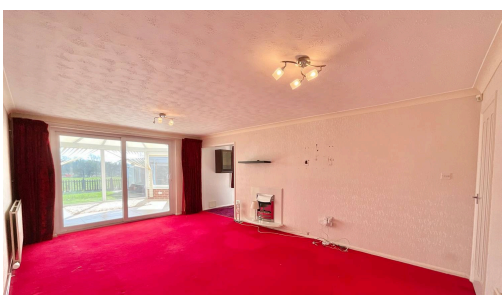
Trentham benefits from easy access to the **A34, A50 and M6**, as well as main line rail stations in Stoke and Stafford making it ideal for commuters.



Spacious four-bed detached home on a corner plot in Trentham with south-facing garden with views, double garage, flexible living spaces, and excellent local amenities and transport links.

Council Tax band: E

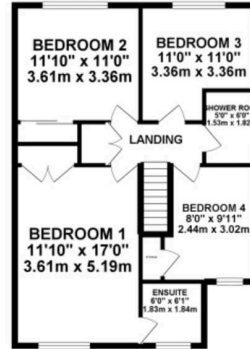
Tenure: Freehold



GROUND FLOOR 1215.18 sq. ft.
(112.89 sq. m.)

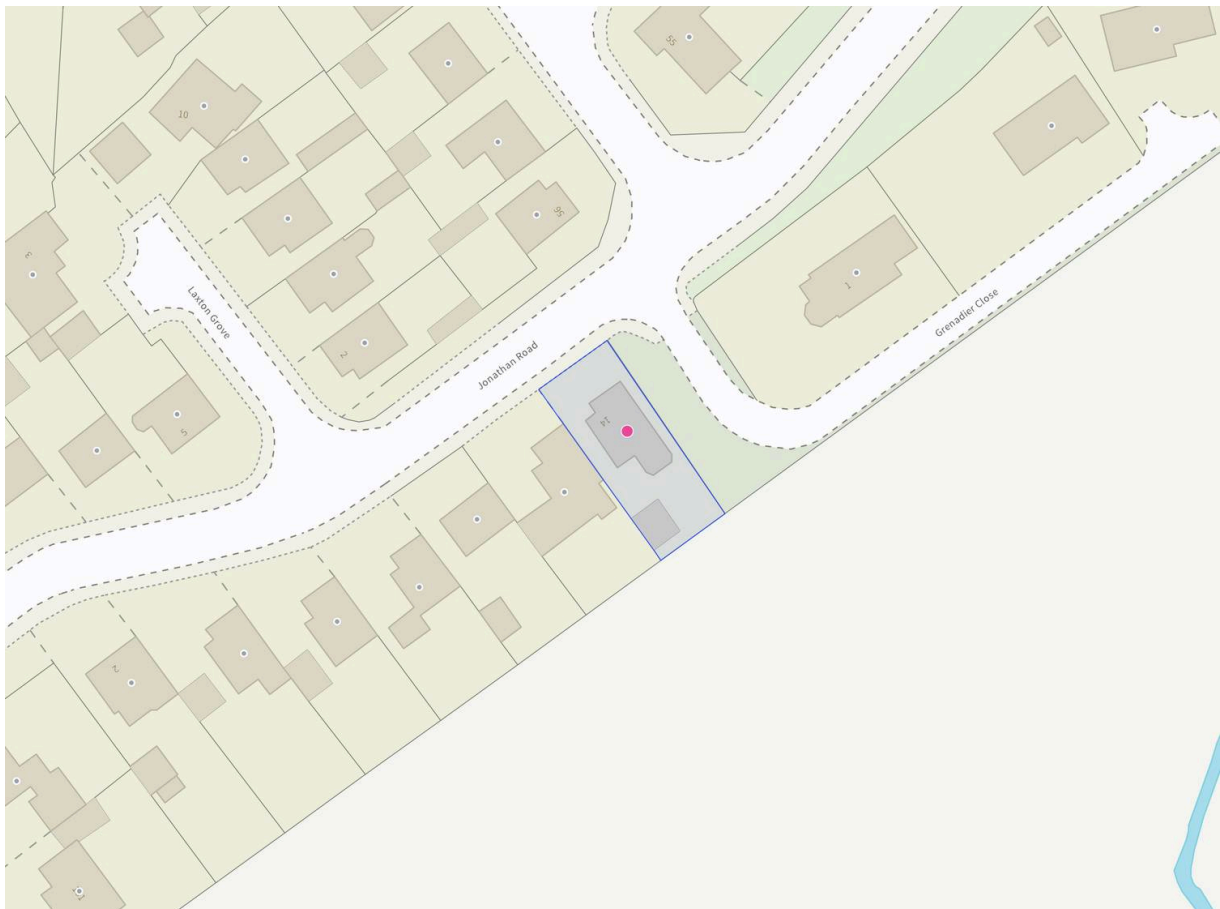


1ST FLOOR 685.19 sq. ft.
(63.66 sq. m.)



TOTAL FLOOR AREA: 1900.37 sq. ft. (176.55 sq. m.) approx.

Whilst every attempt has been made to ensure the accuracy of the floorplan contained here, measurements of doors, windows, rooms and any other items are approximate and the responsibility is taken for any error, omission or mis-statement. This plan is for illustrative purposes only and should be used as a guide only and proposed in purchase. The services, systems and appliances shown have not been tested and no guarantee is given as to their operability or efficiency and the plan is made with 1/8" (3mm) scale.



You can include any text here. The text can be modified upon generating your brochure.